

13790510059

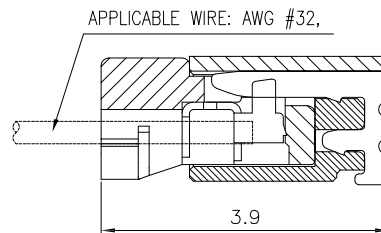
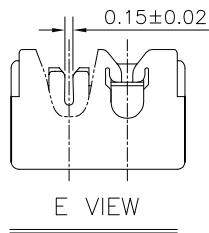
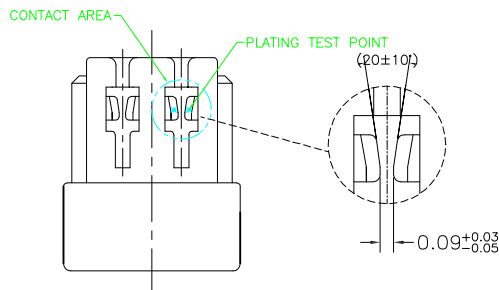
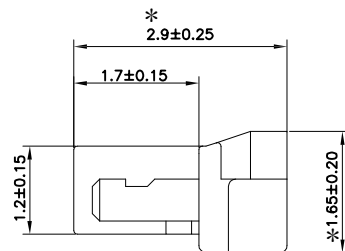
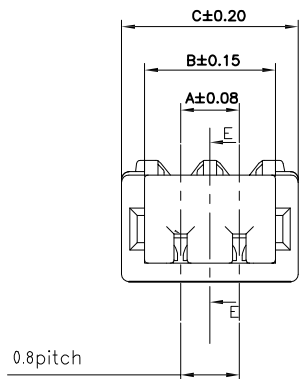
5

4

3

2

1



EST0800 H - 1*NP X - B - X - HF-NK - X

↑ 羿通代码+间距 ↑ PIN数 ↑ X本色 ↑ X普通 ↑ X公胶壳 ↑ NO MARK ↑ A灼热丝750

↑ 羿通代码+间距 ↑ 1示意单排 ↑ B黑色 ↑ B带扣 ↑ G母胶壳 ↑ HF示意无卤 ↑ B灼热丝850

↑ 羿通代码+间距 ↑ 2示意双排 ↑ R红色 ↑ 2L示意两侧带锁扣 ↑ U超薄防呆型 ↑ NF普通含卤 ↑ X普通料

↑ 羿通代码+间距 ↑ 羿通代码+间距 ↑ L蓝色 ↑ HV带高凸点 ↑ LC带低凸点 ↑ K卡槽 ↑ E有耳

↑ 羿通代码+间距 ↑ 羿通代码+间距 ↑ Y黄色 ↑ NE无耳

↑ 羿通代码+间距 ↑ 羿通代码+间距 ↑ G绿色 ↑ C透明

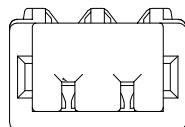
H示意胶壳,
H后无数字默认材质V0
H后带数字2示意材质V2

NOTE:

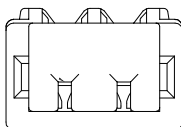
1.MATERIAL:
Housing: ThermalPlastic (UL94V-0)
Terminal: Copper Alloy
Color: Natural

2.SPECIFICATION:
Current Rating: 0.5A AC,DC (AWG#32)
Voltage Rating: 30V (AC,DC)
Contact Resistance: Initial: 30mΩ max
After environmental: 40mΩmax
Insulator Resistance:Initial: 100MΩ min
After environmental:100MΩ min
Withstanding Voltage:200v AC for 1 minute
Temperature Range: -25°C~85°C
Applicable Wire: AWG #32
Insulation O.D.: φ0.38±0.02mm

EST0800H-1*NPX-E



EST0800H-1*NPX-NE



CKT	DIM A	DIM B	DIM C
2	0.80	1.78	2.40
3	1.60	2.58	3.20
4	2.40	3.38	4.00
5	3.20	4.18	4.80
6	4.00	4.98	5.60
7	4.80	5.78	6.40
8	5.60	6.58	7.20
9	6.40	7.38	8.00
10	7.20	8.18	8.80
11	8.00	8.98	9.60
12	8.80	9.78	10.40
13	9.60	10.58	11.20
14	10.40	11.38	12.00
15	11.20	12.18	12.80
16	12.00	12.98	13.60
17	12.80	13.78	14.40
18	13.60	14.58	15.20
19	14.40	15.38	16.00
20	15.20	16.18	16.80
21	16.00	16.98	17.60
22	16.80	17.78	18.40
23	17.60	18.58	19.20
24	18.40	19.38	20.00

日期版次 REVISION	日期 DATE	变更内容 DESCRIPTION	核 准 APPROVALBY



东莞市羿通实业有限公司
DONGGUAN EASTOM ELECTRONIC Co., Ltd.

料号PART NO: EST0800H-1*NPX-NE

品名 TITLE: 0.8刺破线端 (无耳)

材料:

单位: MM

包装规格:

比例: 1:1

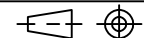
制图:

审核:

核准:

日期: 2022. 4. 6

一般公差
GENERAL TOLERANCE
X, X ±0.25
X, XX ±0.20
ANGLE ±1°



6

5

4

3

2

1

XE