

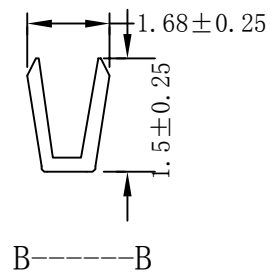
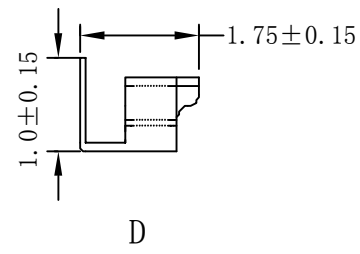
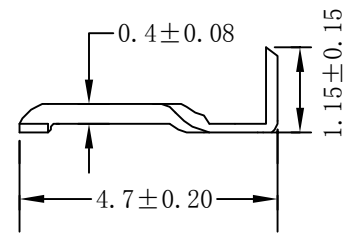
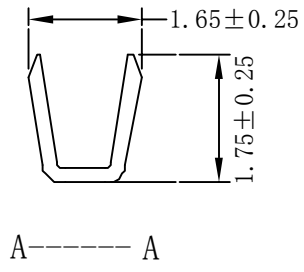
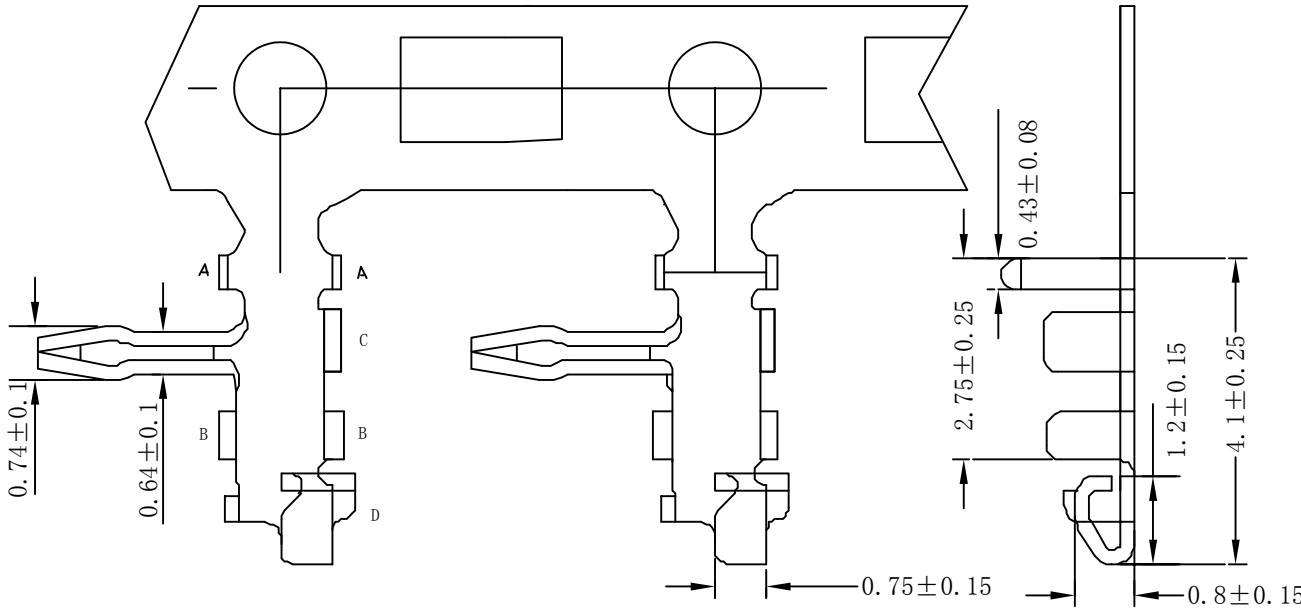
EST1500 T B X - 2 X - C

↑ 羿通代码+间距  
 ↑ T示意端子  
 ↑ X普通  
 ↑ L长  
 ↑ S短  
 ↑ X公  
 ↑ G母  
 ↑ C示意90°  
 ↑ S示意180°

0素材  
 2镀锡先冲后镀  
 3镀锡先镀后冲  
 5G、15G示意镀金5U"或15U", 1G示意镀金1U"


X普通脚  
 H高脚

P磷铜  
 B黄铜  
 E合金铜



PRODUCT SPECIFICATON

1. SURFACE TREATEMENT: Tin plated brass terminal
2. Temperature range:  $-25^{\circ}\text{C} \sim 85^{\circ}\text{C}$
3. Current rating: 0.7A AC/DC
4. Contact resistance: 20mΩ MAX
5. Insulation resistance: 1000MΩ MIN
6. Withstand voltage: 1000V AC/Minute
7. Applicable wire: 24~30#



**东莞市羿通实业有限公司**  
**DONGGUAN EASTOM ELECTRONIC Co., Ltd.**

料号PART NO: EST1500TBX-2X-C		一般公差 GENERAL TOLERANCE	
品名 TITLE: SZN1.5-T(90°)		X.X ±0.15	
材料:C2680	单位: MM	包装规格:	比例: 1:1
日期版次 REVISION	日期 DATE	变更内容 DESCRIPTION	核 准 APPROVALBY
制图:		审核:	核准:
		日期: 2020.6.5	

日期版次 REVISION	日期 DATE	变更内容 DESCRIPTION	核 准 APPROVALBY	制图:	审核:

