

13790510059

5

4

3

2

F

F

E

E

D

D

C

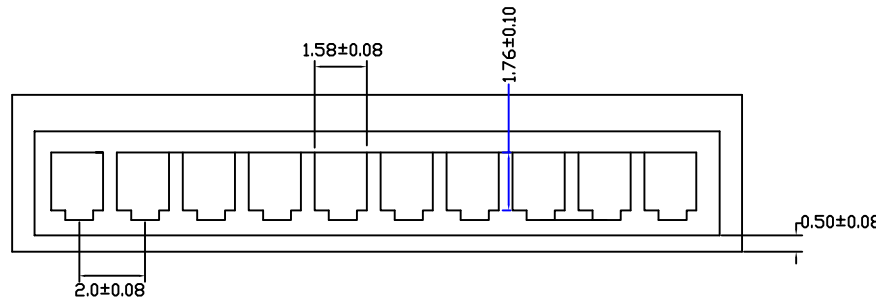
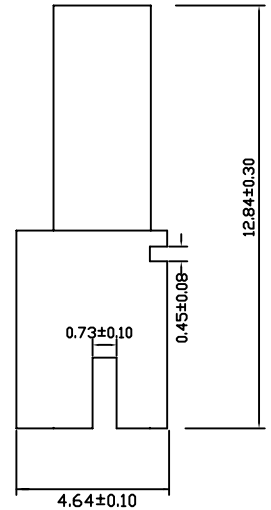
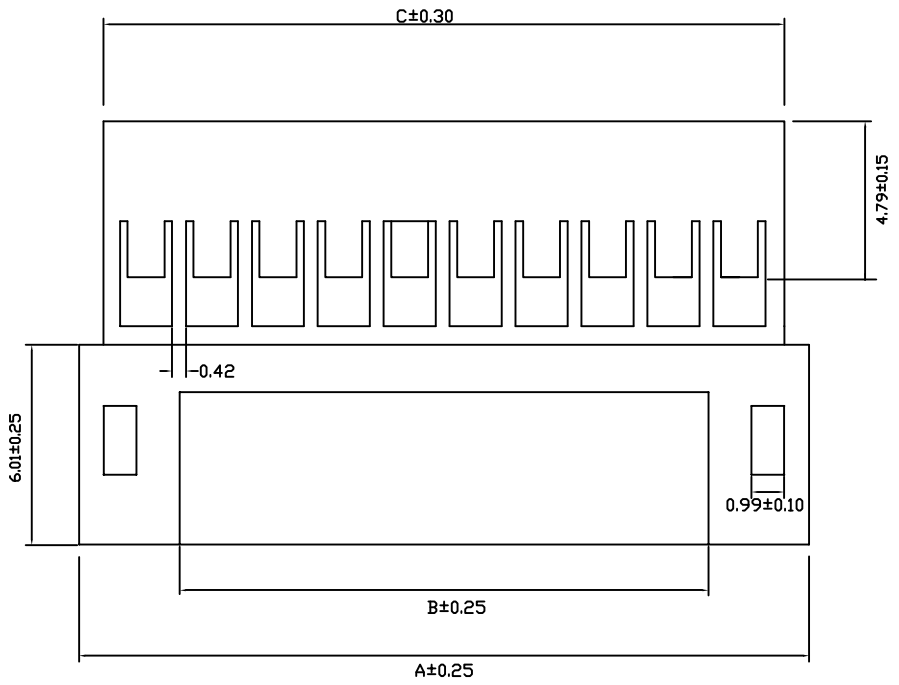
C

B

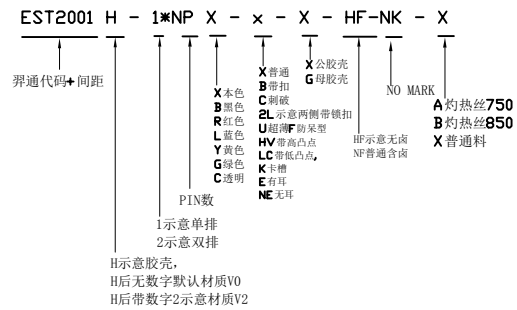
B

A

A




PART NO	size		
	A	B	C
2P	6.12	1.25	4.78
3P	8.12	2.00	6.78
4P	10.12	4.00	8.78
5P	12.12	6.00	10.78
6P	14.12	8.00	12.78
7P	16.12	10.00	14.78
8P	18.12	12.00	16.78
9P	20.12	14.00	18.78
10P	22.12	16.00	20.78
11P	24.12	18.00	22.78
12P	26.12	20.00	24.78
13P	28.12	22.00	26.78
14P	30.12	24.00	28.78
15P	32.12	26.00	30.78



技术参数 SPECIFICATIONS

- 适用线规: AWG#24-#28  
Applicable wire: AWG#24-#28
- 额定电压: 250V DC/AC (有效值)  
Voltage rating: 250V DC/AC (rms)
- 额定电流: 3.0A max  
Current rating: 3.0A max
- 耐压值: 800V AC(有效值)  
Withstand voltage: 800V AC(rms)
- 工作温度: -25℃~+85℃  
Working Temperature: -25℃+85℃
- 绝缘电阻: ≥1000MΩ  
Insulation resistance: ≥1000MΩ
- 接触电阻: ≤0.02Ω  
Contact resistance: ≤0.02Ω



## 东莞市羿通实业有限公司

### DONGGUAN EASTOM ELECTRONIC Co., Ltd.

料号 PART NO: EST2001H-1*NPX-X				一般公差 GENERAL TOLERANCE	
品名 TITLE: PH2.0-H母				X.X ±0.30	
材料: PA66				X.XX ±0.20	
单位: MM		包装规格:		比例: 1:1	
制图: 胡宗显		审核: 陈澧兵		日期: 2022/05/11	
核准: 李海平		日期: 2022/05/11		ANGLE ±1°	

日期版次 REVISION	日期 DATE	变更内容 DESCRIPTION	核 准 APPROVAL BY

6

5

4

3

2

1

JP