

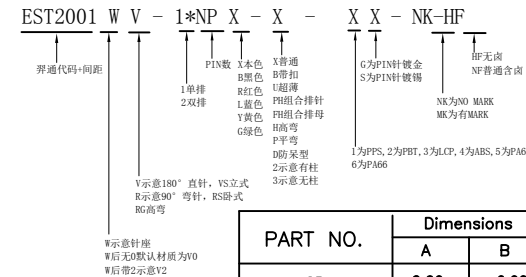
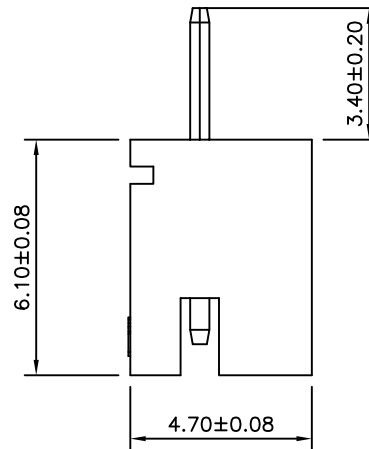
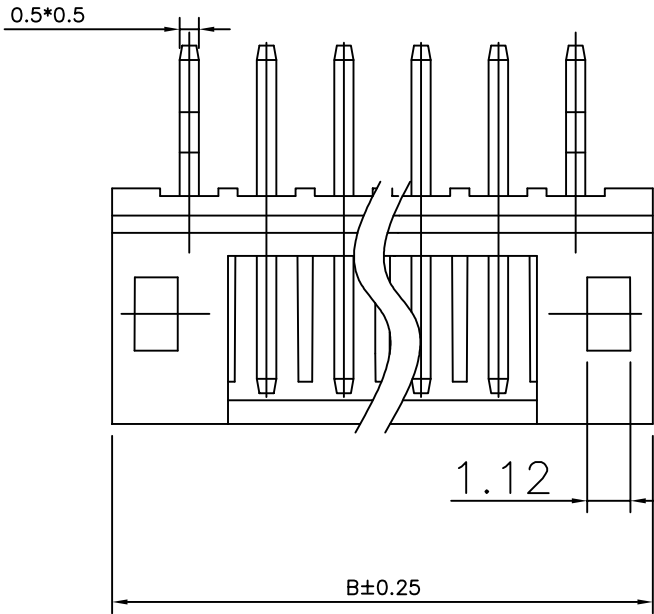
13790510059

5

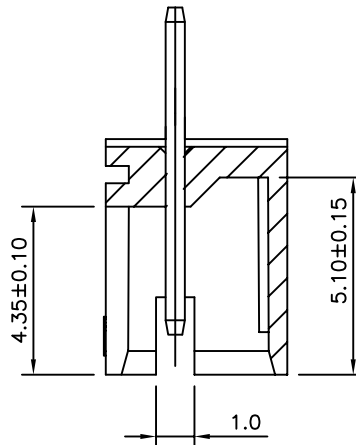
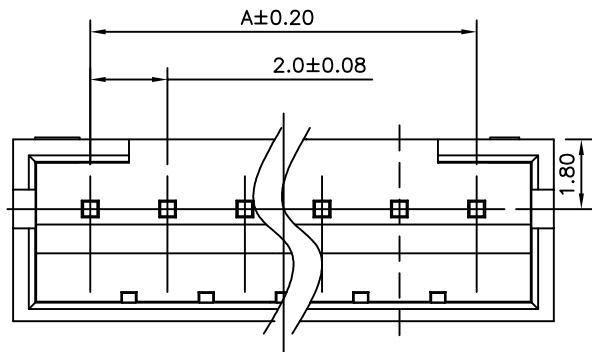
4

3

2

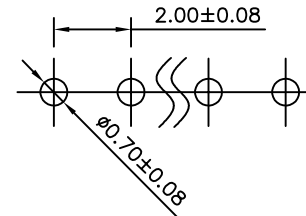


PART NO.	Dimensions	
	A	B
2P	2.00	6.00
3P	4.00	8.00
4P	6.00	10.00
5P	8.00	12.00
6P	10.00	14.00
7P	12.00	16.00
8P	14.00	18.00
9P	16.00	20.00
10P	18.00	22.00
11P	20.00	24.00
12P	22.00	26.00
13P	24.00	28.00
14P	26.00	30.00
15P	28.00	32.00
16P	30.00	34.00



Recommended P.C.B Layout(Top Side)

P.C.B Thickness = 1.20mm (Tolerance=±0.05)



NOTES:

MATERIAL:PA66UL94V-0  
 CONTACT: BRASS,TIN PLATED  
 CURRENT RATING: 2A AC/DC  
 VOLTAGE RATING: 100V AC/DC  
 TEMPERATURE RANGE: -25°C~+85°C  
 CONTACT RESISTANCE: 20mΩ MAX  
 INSULATION RESISTANCE:1000MΩ MIN  
 WITHSTANDING VOLTAGE:800V AC/MINUTE  
 FLASH: 0.05MAX;WARPAGE: 0.08MAX

日期版次 REVISION	日期 DATE	变更内容 DESCRIPTION	核 准 APPROVALBY



东莞市羿通实业有限公司  
 DONGGUAN EASTOM ELECTRONIC Co., Ltd.

料号PART NO: EST2001WV-1\*NPX-X

品名 TITLE: PH2.0-Wafer180° (无K)

材料: PA66

单位: MM

包装规格: 1K/包

比例: 1:1

制图: LI

审核: LI

核准: LI

日期: 2021/05/11

一般公差  
 GENERAL TOLERANCE  
 X.X ±0.30  
 X.XX ±0.15  
 X.XXX ±0.05  
 ANGLE ±1°



6

5

4

3

2

1