

13790510059

5

4

3

2

1

EST2002W V - 1*NP X - X - X X - NK-HF

↑ 羿通代码+间距 ↑ PIN数 X本色
1单排 2双排 B黑色
L蓝色 Y黄色 G绿色

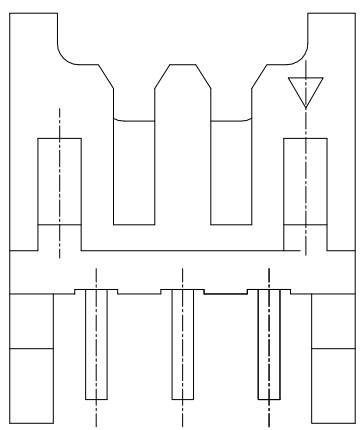
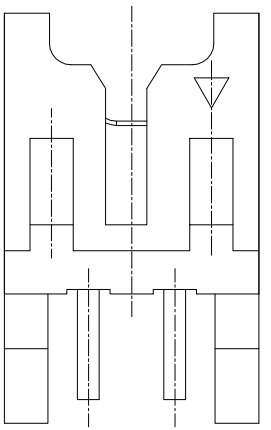
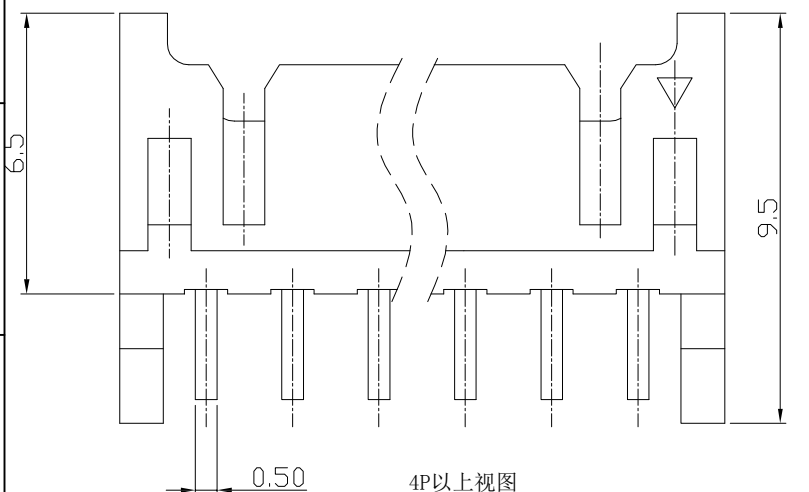
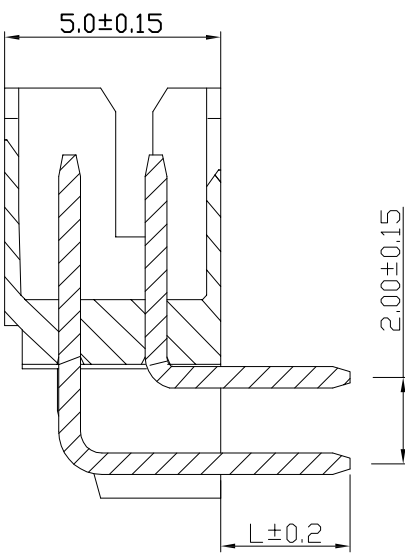
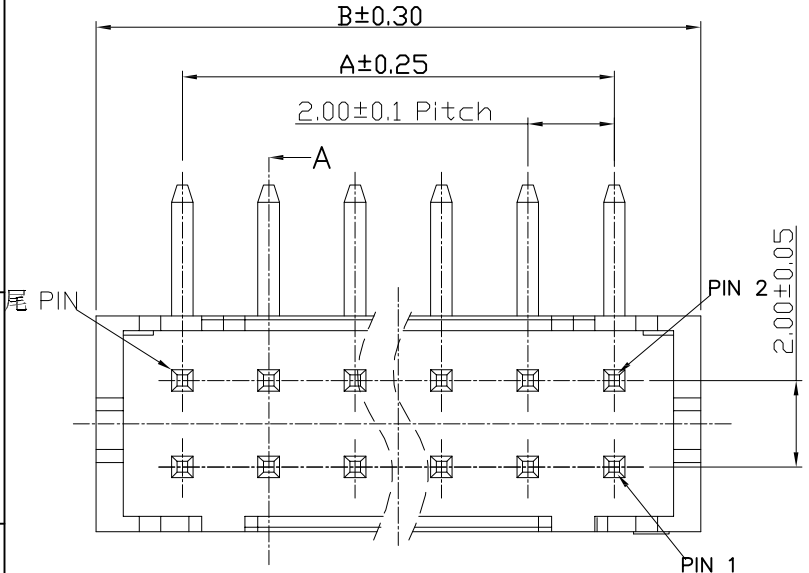
↑ X普通 B带扣 L超薄 PH组合排针 PH组合排母
H高弯 K打脚 F平弯 D防呆型 2示意有柱 L0带定位无K KLO带定位打K

↑ G为PIN针镀金 5为PIN针镀锡 NK为NO MARK HF无齿 NF普通含齿

↑ 1为PPS, 2为PBT, 3为LCP, 4为ABS, 5为PA6T, 6为PA66

↑ R示意180°直针, VS立式
R示意90°弯针, RS卧式
RG高弯

↑ W示意针座
W后带2示意V2



L
3.00
2.40
2.00

PIN NO.	Dimensions	
	A	B
2*2P	6.00	2.00
2*3P	8.00	4.00
2*4P	10.00	6.00
2*5P	12.00	8.00
2*6P	14.00	10.00
2*7P	16.00	12.00
2*8P	18.00	14.00
2*9P	20.00	16.00
2*10P	22.00	18.00
2*11P	24.00	20.00
2*12P	26.00	22.00
2*13P	28.00	24.00
2*14P	30.00	26.00
2*15P	32.00	28.00
2*16P	34.00	30.00
2*17P	36.00	32.00
2*18P	38.00	34.00
2*19P	40.00	36.00
2*20P	42.00	38.00

- SPECIFICATIONS
- Voltage rating: 250V AC/DC;
 - Current rating: 3A AC/DC;
 - Withstanding Voltage: 800V AC/minute
 - Insulation resistance: 1000MΩ Min
 - Temperature range: -25°C ~ +85°C
 - Contact resistance: 10mΩ Max

日期版次 REVISION	日期 DATE	变更内容 DESCRIPTION	核 准 APPROVAL BY

东莞市羿通实业有限公司
DONGGUAN EASTOM ELECTRONIC Co., Ltd.

料号 PART NO: EST2002RV-2*NPX-X

品名 TITLE: PHD2.0 弯针(双排)

材料: 单位: MM 包装规格: 比例: 1:1

制图: 审核: 核准: 日期: 2022.6.8

一般公差
GENERAL TOLERANCE

X.X ±0.25

X.XX ±0.20

ANGLE ±1°

6

5

4

3

2

1

LP