

13790510059

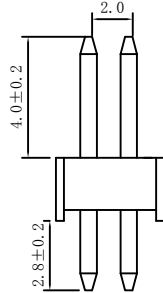
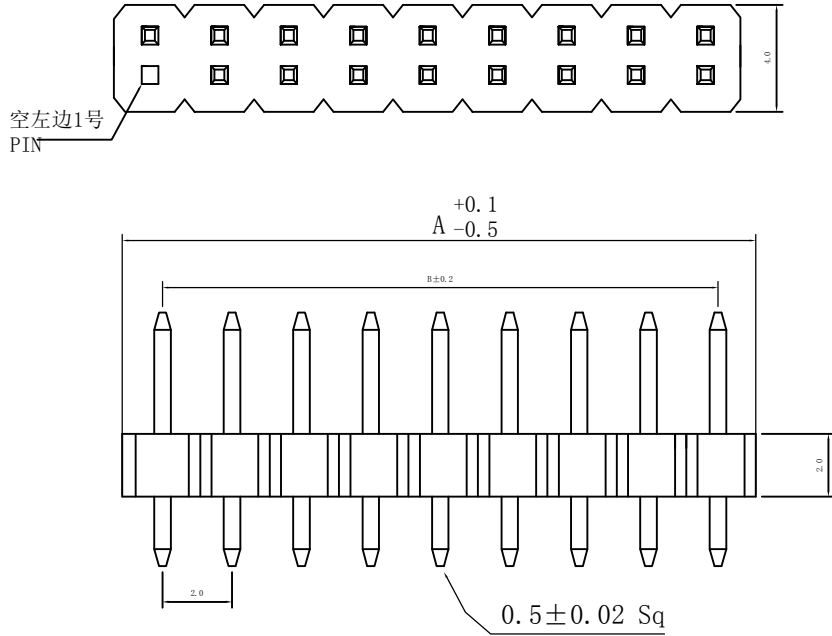
5

4

3

2

1



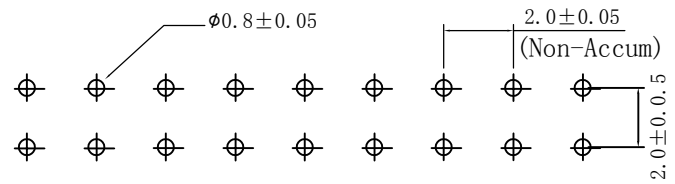
EST2004 W V - 2\*NP X - X - X X - NK-HF

弄通代码-间距      PIN数      X本色      Y普通  
 1单排      2双排      B蓝色      B带扣  
 红色      U超薄  
 L蓝色      PH组合排针  
 Y黄色      PH组合排母  
 G绿色      H高寄  
 K打脚K  
 D助焊型  
 2示意有柱  
 L0带定位无K  
 KLO带定位打K  
 6为PIN针镀金  
 S为PIN针镀锡  
 1为PFS, 2为PBT, 3为LCP, 4为ABS, 5为PA6T,  
 6为PA66  
 HF无齿  
 NF普通含齿  
 NK为NO MARK  
 MK为有MARK

V示意180°直针, VS立式  
 R示意90°弯针, RS卧式  
 RG高寄  
 W示意针座  
 W后无0默认材质为V0  
 W后带2示意V2

Dimensions list

Contacts Per row	Dimensions		Contacts Per row	Dimensions	
	A	B		A	B
1	2.0	0	21	42.0	40.0
2	4.0	2.0	22	44.0	42.0
3	6.0	4.0	23	46.0	44.0
4	8.0	6.0	24	48.0	46.0
5	10.0	8.0	25	50.0	48.0
6	12.0	10.0	26	52.0	50.0
7	14.0	12.0	27	54.0	52.0
8	16.0	14.0	28	56.0	54.0
9	18.0	16.0	29	58.0	56.0
10	20.0	18.0	30	60.0	58.0
11	22.0	20.0	31	62.0	60.0
12	24.0	22.0	32	64.0	62.0
13	26.0	24.0	33	66.0	64.0
14	28.0	26.0	34	68.0	66.0
15	30.0	28.0	35	70.0	68.0
16	32.0	30.0	36	72.0	70.0
17	34.0	32.0	37	74.0	72.0
18	36.0	34.0	38	76.0	74.0
19	38.0	36.0	39	78.0	76.0
20	40.0	38.0	40	80.0	78.0



PCB Layout

SPECIFICATIONS

**Current Rating:** 1Amps  
**Insulator Resistance:** 5000Megohms min.  
**Dielectric Withstanding:** AC 500v  
**Contact Material:** Brass  
**Operating Temperature:** -40° ~ +105°C  
**Max Processing Temp:** 230° TO 260° for 30-60 seconds  
**Insulator Material:** NYLON-6T  
**PLTAING:** GOLD FLASH  
**UNSPECIFIED TOLERANCE:** ±0.20

日期版次 REVISION	日期 DATE	变更内容 DESCRIPTION	核 准 APPROVALBY

**东莞市羿通实业有限公司**  
DONGGUAN EASTOM ELECTRONIC Co., Ltd.

料号PART NO: EST2004WV-2*NPB-X			一般公差 GENERAL TOLERANCE X.X ±0.25 X.XX ±0.20 ANGLE ±1°
品名 TITLE: DB2.0直针 (双排)			
材料:	单位: MM	包装规格:	比例: 1:1
制图:	审核:	核准:	日期: 2022.6.12

6

5

4

3

2

1

XCL