

13790510059

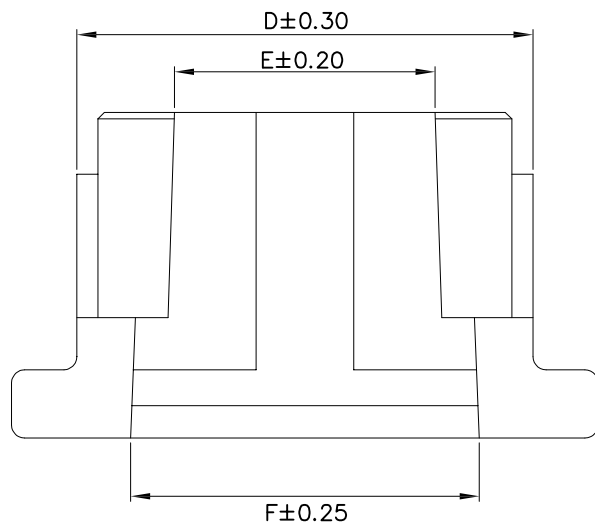
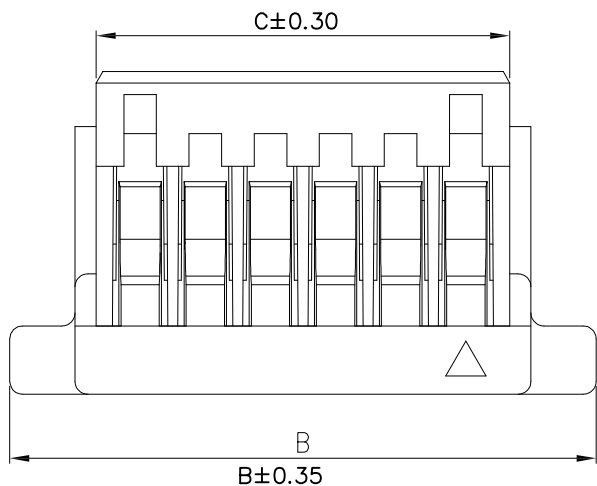
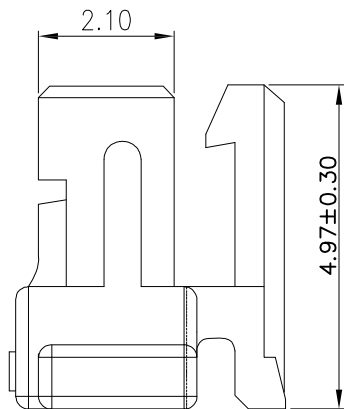
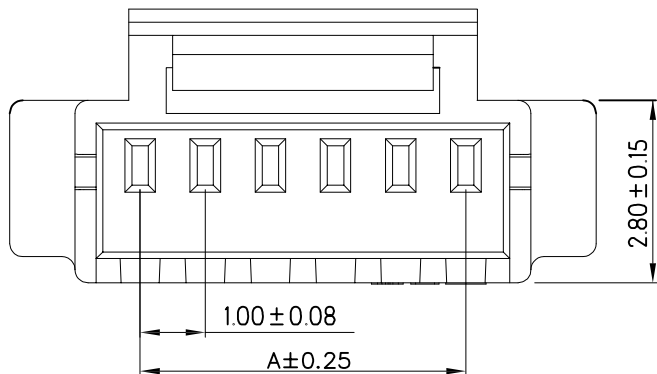
5

4

3

2

1



| Pin | A | B | C | D | E | F |
|-----|-------|-------|-------|-------|------|------|
| 2 | 1.00 | 5.00 | 2.35 | 3.00 | 1.00 | 2.35 |
| 3 | 2.00 | 6.00 | 3.35 | 4.00 | 2.00 | 3.35 |
| 4 | 3.00 | 7.00 | 4.35 | 5.00 | 3.00 | 4.35 |
| 5 | 4.00 | 8.00 | 5.35 | 6.00 | * | * |
| 6 | 5.00 | 9.00 | 6.35 | 7.00 | 4.00 | 5.3 |
| 7 | 6.00 | 10.00 | 7.35 | 8.00 | * | * |
| 8 | 7.00 | 11.00 | 8.35 | 9.00 | 4.00 | 5.35 |
| 9 | 8.00 | 12.00 | 9.35 | 10.00 | 4.00 | 5.35 |
| 10 | 9.00 | 13.00 | 10.35 | 11.00 | 4.00 | 5.35 |
| 11 | 10.00 | 14.00 | 11.35 | 12.00 | * | * |
| 12 | 11.00 | 15.00 | 12.35 | 13.00 | * | * |
| 13 | 12.00 | 16.00 | 13.35 | 14.00 | * | * |
| 14 | 13.00 | 17.00 | 14.35 | 15.00 | * | * |
| 15 | 14.00 | 18.00 | 15.35 | 16.00 | * | * |
| 16 | 15.00 | 19.00 | 16.35 | 17.00 | * | * |
| 17 | 16.00 | 20.00 | 17.35 | 18.00 | * | * |
| 18 | 17.00 | 21.00 | 18.35 | 19.00 | * | * |
| 19 | 18.00 | 22.00 | 19.35 | 20.00 | * | * |
| 20 | 19.00 | 23.00 | 20.35 | 21.00 | ↓ | * |

EST1001 H - 1*NP X - B - X - HF-NK - X

↑ 羿通代码+间距 ↑ PIN数 X本色 X普通 X公胶壳
 B黑色 B带扣 G母胶壳
 R红色 C刺破 L示意LOCK TYPE
 L蓝色 U超薄防呆型 HV带高凸点
 Y黄色 LC带低凸点, K卡槽
 G绿色 C透明 E有耳
 C透明 NE无耳

1示意单排 2示意双排

H示意胶壳, H后无数字默认材质V0 HF示意无卤 NF普通含卤
 H后带数字2示意材质V2

NO MARK A灼热丝750 B灼热丝850 X普通料

PRODUCT SPECIFICATION

1. Temperature range: -25°C ~ 85°C
2. Current rating: 1A AC/DC
3. Contact resistance: 20mΩ MAX
4. Insulation resistance: 100MΩ MIN
5. Withstand voltage: 500V AC/Minute
6. Material: PA66 UL94V0
7. Color: Natural (white)



东莞市羿通实业有限公司
 DONGGUAN EASTOM ELECTRONIC Co., Ltd.

料号PART NO: EST1001H-1*NPX-B-X

品名 TITLE: SH1.0-H (带扣)

材料: PA66

单位: MM

包装规格:

比例: 1:1

制图: 胡宗显

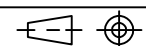
审核:

核准: 李海平

日期: 2022-4-9

| 一般公差 GENERAL TOLERANCE | |
|---------------------------|-------|
| X.X | ±0.25 |
| X.XX | ±0.20 |
| ANGLE | ±1° |

| 日期版次 REVISION | 日期 DATE | 变更内容 DESCRIPTION | 核 准 APPROVALBY |
|------------------|------------|---------------------|-------------------|
| | | | |
| | | | |
| | | | |



6

5

4

3

2

1

XR