

13750510009

5

4

3

2

F

F

E

E

D

D

C

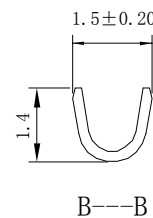
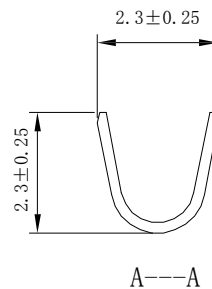
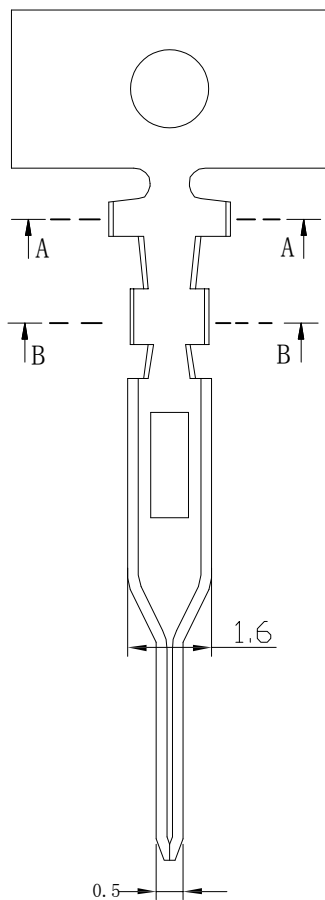
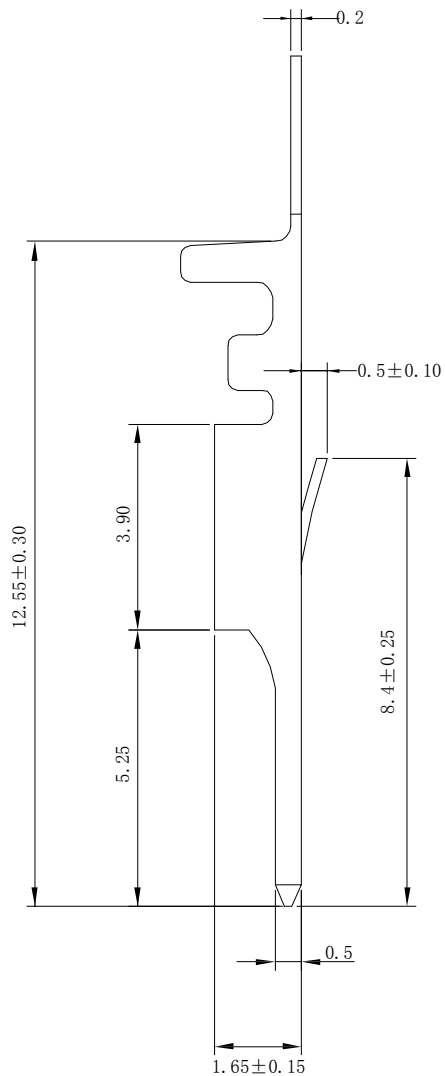
C

B

B

A

A



EST2010 T P X - 2 X - X

↑ 羿通代码+间距      ↑ T示意端子      ↑ P磷铜  
B黄铜      E合金铜

↑ X普通脚      H高脚      E增高型脚

↑ 0素材      2镀锡先冲后镀      3镀锡先镀后冲      4镀全镍(镀后冲)      4.2镀全镍先冲后镀      5G、15G示意镀金5U"或15U", 1G示意镀金1U"

↑ X公端      G母端      C示意90°      S示意180°

↑ X普通      L长      S短      U超薄

■ SPECIFICATIONS

- Voltage rating: 250V AC/DC;
- Current rating: 2A AC/DC;
- Withstanding Voltage: 800V AC/minute
- Insulation resistance: 1000MΩ Min
- Temperature range: -40°C ~ +150°C
- Contact resistance: 20mΩ Max



东莞市羿通实业有限公司  
DONGGUAN EASTOM ELECTRONIC Co., Ltd.

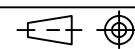
料号PART NO: EST2010TPX-2X-X

品名 TITLE: PHS2.0-T公

材料: C5191	单位: MM	包装规格:	比例: 1:1
制图:	审核:	核准:	日期: 2022/06/14

一般公差  
GENERAL TOLERANCE  
X.X ±0.25  
X.XX ±0.20  
ANGLE ±1°

日期版次 REVISION	日期 DATE	变更内容 DESCRIPTION	核 准 APPROVALBY



6

5

4

3

2

1

YL