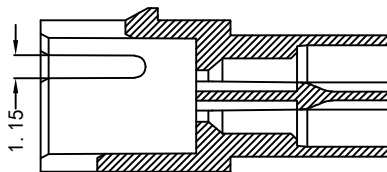
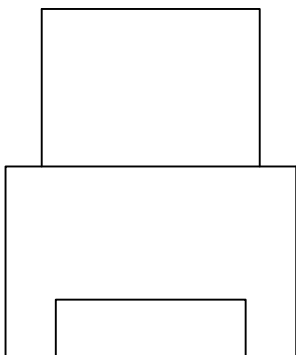
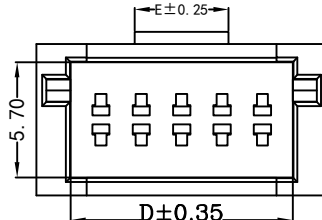
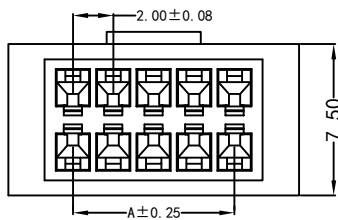
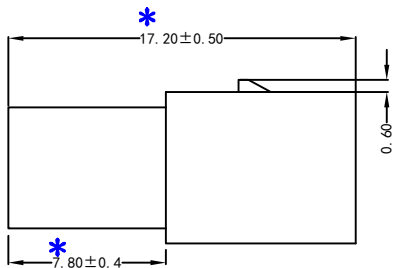


PIN No.	Dimension				
	A	B	C	D	E
2*2	2.00	4.80	8.40	5.00	2.60
2*3	4.00	6.80	10.40	7.00	2.60
2*4	6.00	8.80	12.40	9.00	2.60
2*5	8.00	10.80	14.40	11.00	4.70
2*6	10.00	12.00	16.00	13.00	6.70
2*7	12.00	14.80	18.40	15.00	8.70
2*8	14.00	16.00	20.40	17.00	10.70
2*9	16.00	18.80	22.40	19.00	12.70
2*10	18.00	20.80	24.40	21.00	14.70
2*11	20.00	22.80	26.40	23.00	16.70
2*12	22.00	24.80	28.40	25.00	18.70
2*13	24.00	26.80	30.40	27.00	20.70
2*14	26.00	28.80	32.40	29.00	22.70
2*15	28.00	30.80	34.40	31.00	24.70
2*18	34.00	36.80	40.40	37.00	30.70



EST2011 H - 1\*NP X - B - X - HF-NK - X

羿通代码+间距 | 1示单排 | 2示双排 | X普通 | B带扣 | X本色 | B黑色 | R红色 | L蓝色 | Y黄色 | G绿色 | C透明 | X公胶壳 | G母胶壳 | NO MARK | A灼热丝T50 | B灼热丝850 | X普通料 | HF示意无肉 | NP普通含肉 | NE无耳

H示意胶壳, H后无数字默认材质V0, H后带数字2示意材质V2

## 东莞市羿通实业有限公司

### DONGGUAN EASTOM ELECTRONIC Co., Ltd.

料号PART NO: EST2011H-2*NPX-B-G		一般公差 GENERAL TOLERANCE	
品名 TITLE: PHB2.0-H(带扣母)		X.X ±0.30	
材料:		单位: MM	包装规格:
日期版次 REVISION		日期 DATE	变更内容 DESCRIPTION
X.XX ±0.25		比例: 1:1	ANGLE ±1°
制图:		审核:	日期: 2022.04.16
核 准 APPROVALBY			

F  
E  
D  
C  
B  
A

F  
E  
D  
C  
B  
A