

13790510059

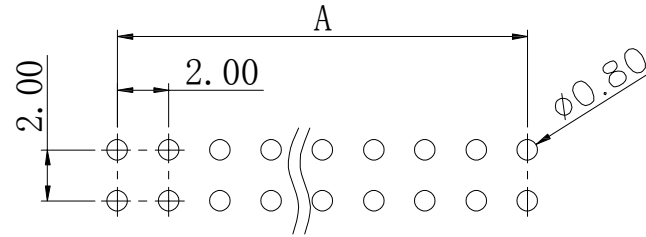
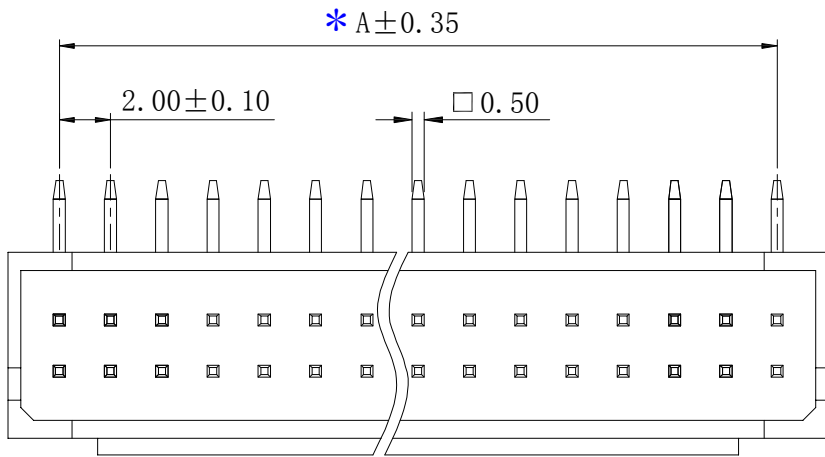
5

4

3

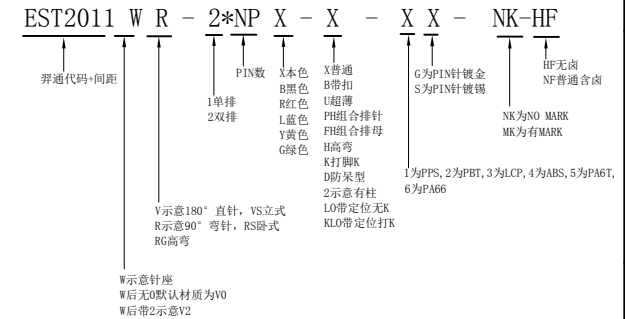
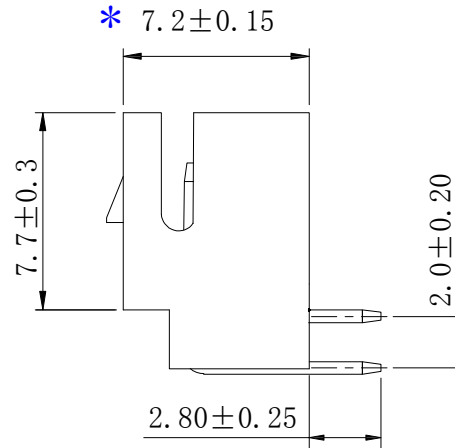
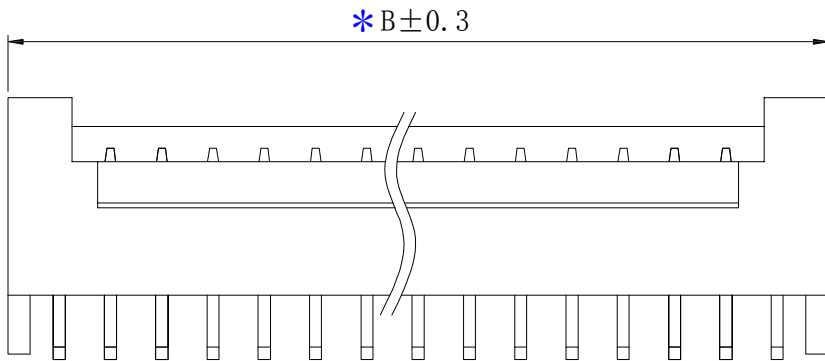
2

1



Recommended P.C.Board Hole Layout

孔数	尺寸 (mm)	
	A	B
PHB-2X2	2.0	6.0
PHB-2X3	4.0	8.0
PHB-2X4	6.0	10.0
PHB-2X5	8.0	12.0
PHB-2X6	10.0	14.0
PHB-2X7	12.0	16.0
PHB-2X8	14.0	18.0
PHB-2X9	16.0	20.0
PHB-2X10	18.0	22.0
PHB-2X11	20.0	24.0
PHB-2X12	22.0	26.0
PHB-2X13	24.0	28.0
PHB-2X14	26.0	30.0
PHB-2X15	28.0	32.0
PHB-2X16	30.0	34.0
PHB-2X17	32.0	36.0
PHB-2X18	34.0	38.0
PHB-2X19	36.0	40.0
PHB-2X20	38.0	42.0



Specifications

Current rating: 2A
 Voltage rating: 100V AC,DC
 Insulation Resistance: 1000MΩ Min.
 Dielectric Withstanding: 800V AC 1Min
 Contact Resistance: 20mΩ Max.
 Operating Temperature: -25°C to +85°C

Materials:

Contact Material: Brass(Sn plating)
 Insulation Material: PA66 UL94-V0 (YL)

日期版次 REVISION	日期 DATE	变更内容 DESCRIPTION	核 准 APPROVALBY



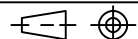
东莞市羿通实业有限公司
 DONGGUAN EASTOM ELECTRONIC Co., Ltd.

料号PART NO: EST2011WR-2*NPX-B

品名 TITLE: PHB-Wafer 弯针

材料: 单位: MM 包装规格: 比例: 1:1
 制图: 审核: 核准: 日期: 2022. 6. 19

一般公差
 GENERAL TOLERANCE
 X, X ±0.25
 X, XX ±0.20
 ANGLE ±1°



6

5

4

3

2

1

KL