

13790510059

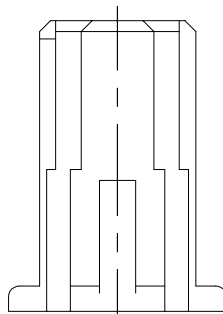
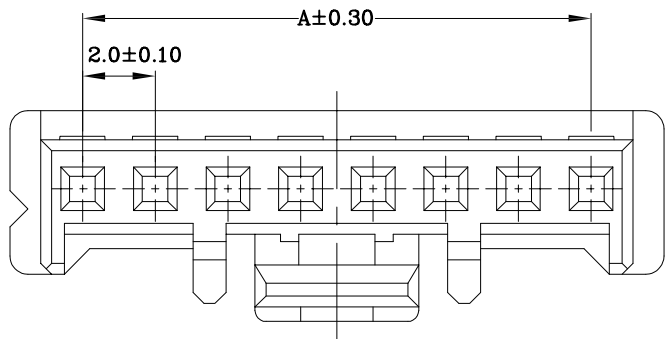
5

4

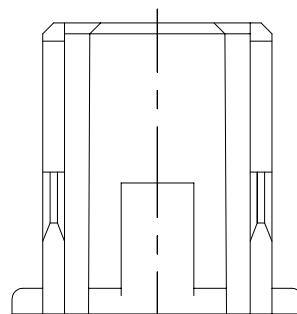
3

2

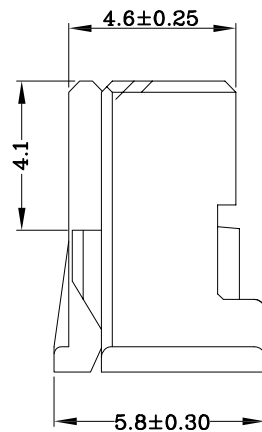
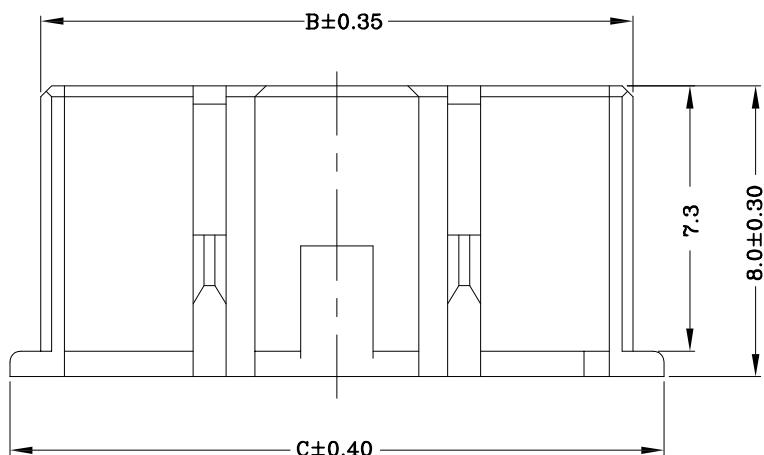
1



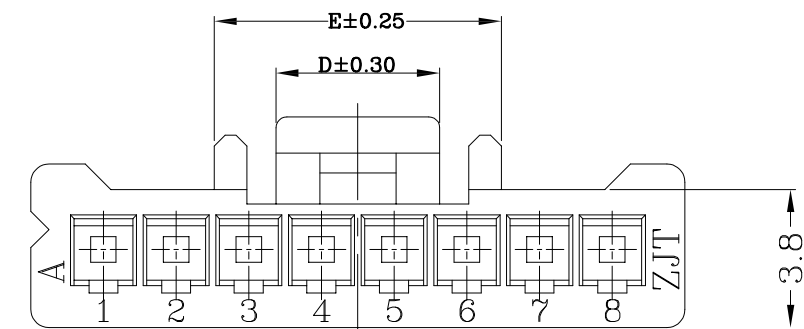
2P



3P



Part No	Dimensions				
	A	B	C	D	E
2 P	2.00	4.3	6.0	2.6	4.4
3 P	4.00	6.3	8.0	3.8	6.4
4 P	6.00	8.3	10.0	4.5	8.4
5 P	8.00	10.3	12.0	4.5	7.9
6 P	10.00	12.3	14.0	4.5	7.9
7 P	12.00	14.3	16.0	4.5	7.9
8 P	14.00	16.3	18.0	4.5	7.9
9 P	16.00	18.3	20.0	4.5	7.9



EST2501 H - 1*NP X - B - X - HF-NK - X

- ↑ 羿通代码+间距
- ↑ PIN数
- ↑ X 本色
- ↑ B 黑色
- ↑ R 红色
- ↑ L 蓝色
- ↑ Y 黄色
- ↑ G 绿色
- ↑ C 透明
- ↑ H 示意胶壳, H后无数字默认材质V0, H后带数字2示意材质V2
- ↑ 1示意单排, 2示意双排
- ↑ X 普通
- ↑ B 带扣
- ↑ C 刺破
- ↑ L 示意LOCK TYPE
- ↑ U 超薄
- ↑ HV 带高凸点
- ↑ LC 带低凸点
- ↑ K 卡槽
- ↑ E 有耳
- ↑ NE 无耳
- ↑ X 公胶壳
- ↑ G 母胶壳
- ↑ NO MARK
- ↑ HP 示意无卤
- ↑ NF 普通含卤
- ↑ A 灼热丝750
- ↑ B 灼热丝850
- ↑ X 普通料



东莞市羿通实业有限公司
DONGGUAN EASTOM ELECTRONIC Co., Ltd.

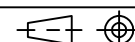
料号PART NO: EST2025H-1*NPX-B

品名 TITLE: PAP-H带扣

材料: 单位: MM 包装规格: 比例: 1:1
 制图: 审核: 核准: 日期: 2021.11.16

一般公差
GENERAL TOLERANCE
 X.X ±0.30
 X.XX ±0.25
 ANGLE ±1°

日期版次 REVISION	日期 DATE	变更内容 DESCRIPTION	核 准 APPROVALBY



ZJ