

13790510059

5

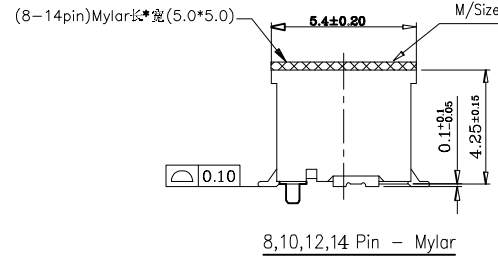
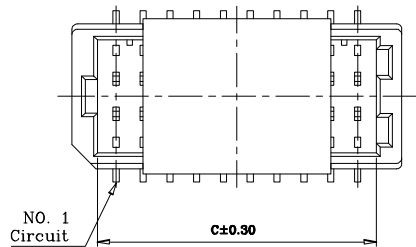
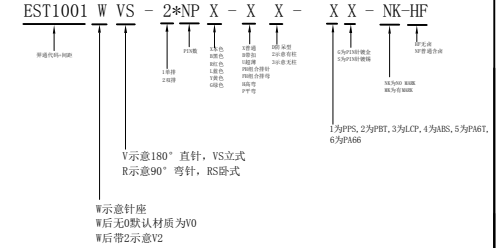
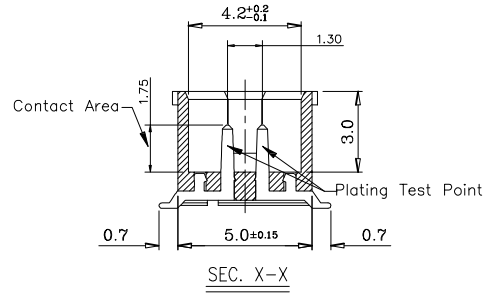
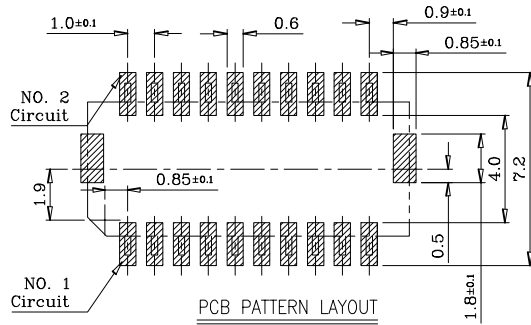
4

3

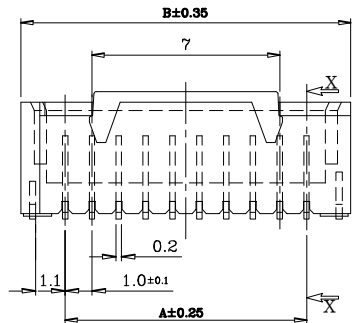
2

NOTES:

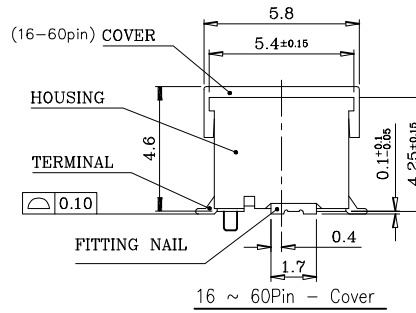
CURRENT RATING: 1A AC/DC
 VOLTAGE RATING: 100V AC/DC
 TEMPERATURE RANGE: -25°C~+85°C
 CONTACT RESISTANCE: 20mΩ MAX
 INSULATION RESISTANCE: 1000MΩ MIN
 WITHSTANDING VOLTAGE: 800V AC/MINUTE
 FLASH: 0.05MAX; WARPAGE: 0.08MAX



Circuit No.	Dimensions		
	A	B	C
08P	3.0	6.3	4.4
10P	4.0	7.3	5.4
12P	5.0	8.3	6.4
14P	6.0	9.3	7.4
16P	7.0	10.3	8.4
18P	8.0	11.3	9.4
20P	9.0	12.3	10.4
24P	11.0	14.3	12.4
28P	13.0	16.3	14.4
30P	14.0	17.3	15.4
34P	16.0	19.3	17.4
40P	19.0	22.3	20.4
50P	24.0	27.3	25.4
50P	29.0	32.3	30.4



Without Date Code



16 ~ 60Pin - Cover

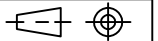
Company Name: DONGGUAN EASTOM INDUSTRIAL CO., LTD
 Address: 1/2 WORKSHOP BUILDING NO. 53 LONGYAN NINTH ROAD, HUMEI TOWN
 DONGGUAN GUANGDONG CHINA
 Tell: 13790510059

3	FITTING NAIL	2	BRASS
2	TERMINAL	~	BRASS
1	HOUSING	1	THERMAL PLASTIC, UL94-V0
NO.	DESCRIPTION	Q'TY.	MATERIAL

日期版次 REVISION	日期 DATE	变更内容 DESCRIPTION	核 准 APPROVAL BY	料号PART NO: EST1001WVS-2*NPX-X2	品名 TITLE: SH1.0立式双排(有柱)	材料:	单位: MM	包装规格: 1K/包	比例: 1:1	一般公差 GENERAL TOLERANCE X.X ±0.30 X.XX ±0.25 X.XXX ±0.10 ANGLE ±1°
				制图: 胡宗显	审核: 李海平				日期: 2022/04/21	



东莞市羿通实业有限公司
 DONGGUAN EASTOM ELECTRONIC Co., Ltd.



XES