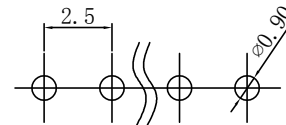


Recommended P.C.B Layout (Top Side)
P.C.B Thickness = 1.20mm
(Tolerance=±0.05)



EST2501 W R - 1*NPX - KLO - XX - NK-HF

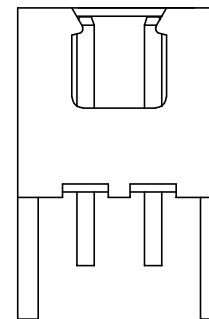
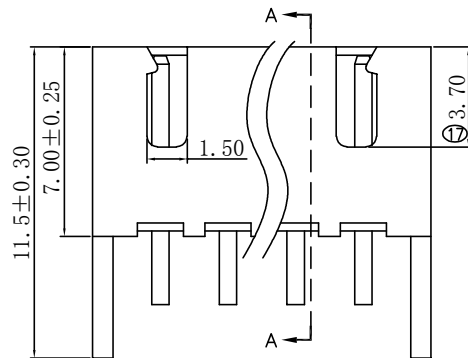
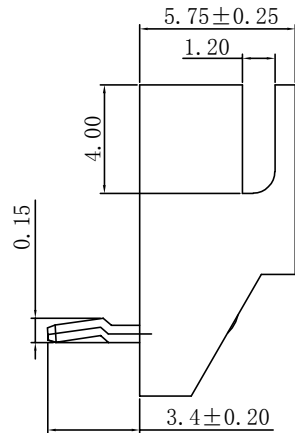
↑ 羿通代码+间距 ↑ PIN数 ↑ X本色 ↑ X普通 ↑ G为PIN针镀金 ↑ HF无点 ↑ NP普通含卤

↑ 羿通代码+间距 ↑ 1单排 ↑ 2双排 ↑ U超薄 ↑ S为PIN针镀锡 ↑ NK为NO MARK ↑ MK为有MARK

↑ V示意180°直针, VS立式 ↑ R示意90°弯针, RS卧式 ↑ D防呆型 ↑ 1为PPS, 2为PBT, 3为LCP, 4为ABS, 5为PA6T, 6为PA66

↑ W示意针座 ↑ 后无0默认材质为V0 ↑ 后带2示意V2

↑ PH组合排针 ↑ H高弯 ↑ L0带定位无K ↑ KLO带定位打K



2P视图

PART NO. (90°)	Dimensions	
	A	B
XH2. 5-2P	7.50	2.50
XH2. 5-3P	10.00	5.00
XH2. 5-4P	12.50	7.50
XH2. 5-5P	15.00	10.00
XH2. 5-6P	17.50	12.50
XH2. 5-7P	20.00	15.00
XH2. 5-8P	22.50	17.50
XH2. 5-9P	25.00	20.00
XH2. 5-10P	27.50	22.50
XH2. 5-11P	30.00	25.00
XH2. 5-12P	32.50	27.50
XH2. 5-13P	35.00	30.00
XH2. 5-14P	37.50	32.50
XH2. 5-15P	40.00	35.00
XH2. 5-16P	42.50	37.50

■ SPECIFICATIONS

- Voltage rating: 250V AC/DC;
- Current rating: 3A AC/DC;
- Withstanding Voltage: 800V AC/minute
- Insulation resistance: 1000MΩ Min
- Temperature range: -25°C ~ +85°C
- Contact resistance: 20mΩ Max

日期版次 REVISION	日期 DATE	变更内容 DESCRIPTION	核 准 APPROVALBY



东莞市羿通实业有限公司
DONGGUAN EASTOM ELECTRONIC Co., Ltd.

料号PART NO: EST2501WR-1*NPX-KLO

品名 TITLE: XH2.5-Wafer带定位打K

材料: PA66 单位: MM 包装规格: 1K/包 比例: 1:1

制图: 审核: 核准: 日期: 2022/7/2

一般公差
GENERAL TOLERANCE
X.X ±0.15
X.XX ±0.05
ANGLE ±1°

