

F

E

D

C

B

A

F

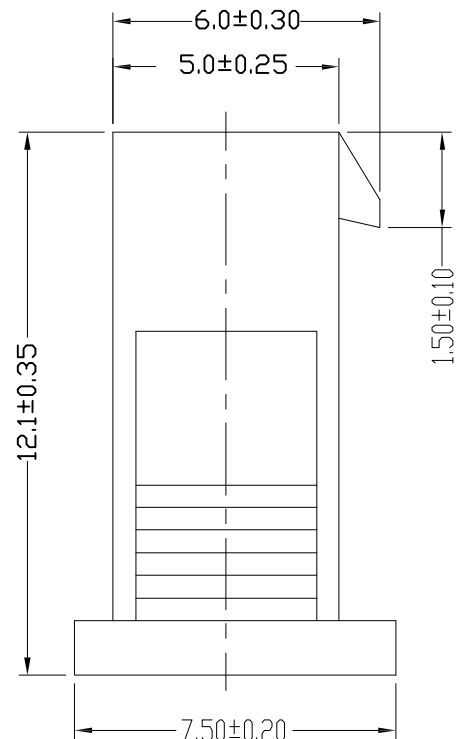
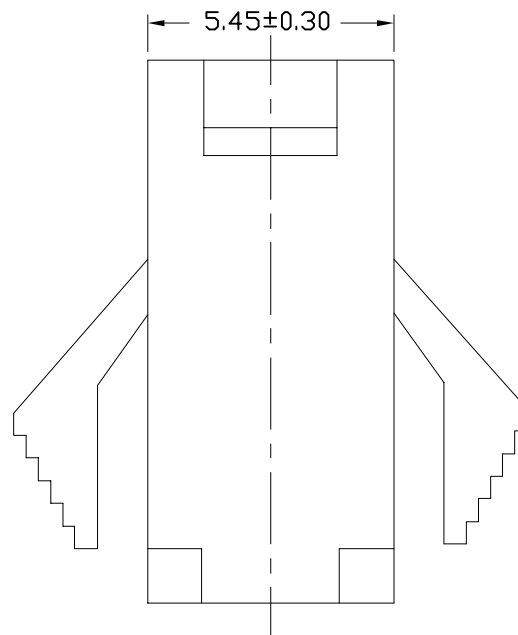
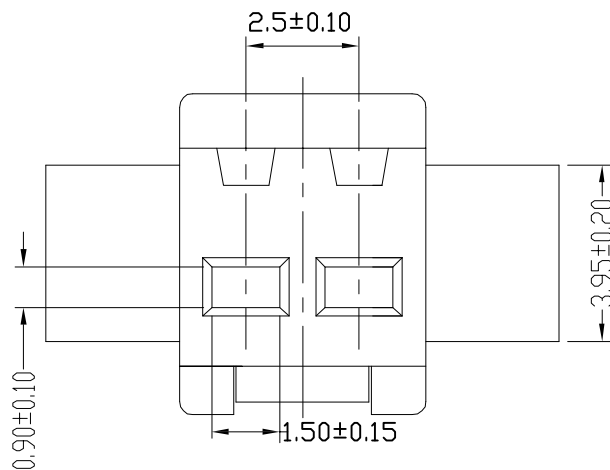
E

D

C

B

A



EST2507 H - 1*NP X - B - X - HF-NK - X

↑ 羿通代码+间距 ↑ PIN数
 1示意单排 2示意双排

↑ X 普通 ↑ X 公胶壳
 ↑ B 带扣 ↑ G 母胶壳
 ↑ C 刺破
 ↑ R 黑色 ↑ 2L 示意两侧带锁扣
 ↑ L 红色 ↑ U 超薄防呆型
 ↑ Y 蓝色 ↑ HV 带高凸点
 ↑ G 黄色 ↑ LC 带低凸点
 ↑ K 透明 ↑ E 有耳


↑ NO MARK ↑ A 灼热丝750
 ↑ X 普通料 ↑ B 灼热丝850
 ↑ X 普通料

↑ HF 示意无卤
 ↑ NF 普通含卤

H 示意胶壳,
 H 后无数字默认材质V0
 H 后带数字2示意材质V2

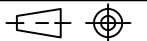
■ SPECIFICATIONS

- Voltage rating: 250V AC/DC;
- Current rating: 3A AC/DC;
- Withstanding Voltage: 1500V AC/minute
- Insulation resistance: 500MΩ Min
- Temperature range: -25°C ~ +85°C
- Contact resistance: 10mΩ Max



东莞市羿通实业有限公司

DONGGUAN EASTOM ELECTRONIC Co., Ltd.

料号 PART NO: EST2507H-1*2PB-E-X				一般公差 GENERAL TOLERANCE	
品名 TITLE: SM2.5-H公				X.X ±0.30	
材料:		单位: MM	包装规格:	X.XX ±0.25	
日期版次 REVISION		日期 DATE	变更内容 DESCRIPTION	ANGLE ±1°	
制图:		审核:	日期: 2022/7/2		
核准 APPROVAL BY		核准:			