

6

5

4

3

2

1

F

F

E

E

D

D

C

C

B

B

A

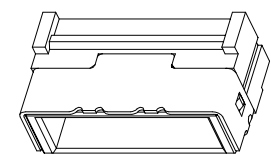
A

### ◆SPECIFICATIONS

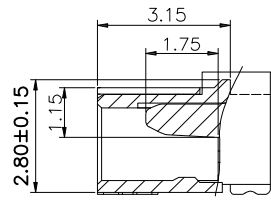
- Current rating: 1A AC, DC
- Voltage rating: 125V AC,DC
- Temperature range: -25°C ~ +85°C
- Insulation resistance: 500MΩ Min.
- Withstanding voltage: 500V AC/ minute.
- Contact resistance: 20mΩ Max.

Material:

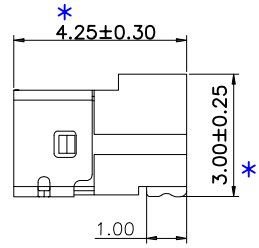
Insulator: LCP UL 94V-0  
 Contact: Brass  
 Plating: Tin plated over Nickel  
 Circuits: 2~20



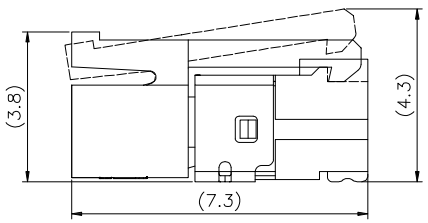
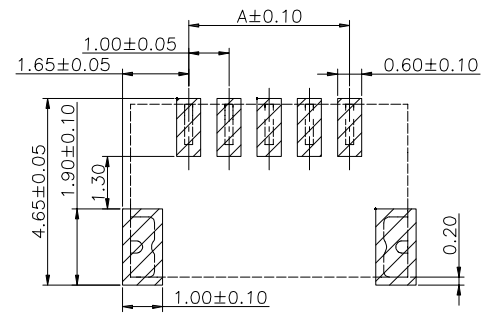
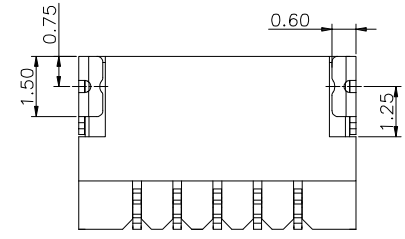
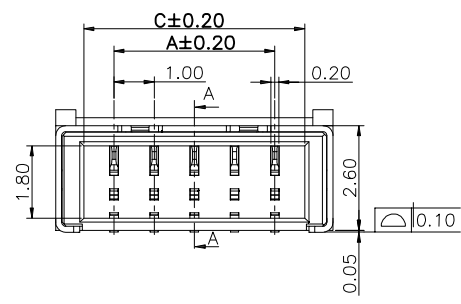
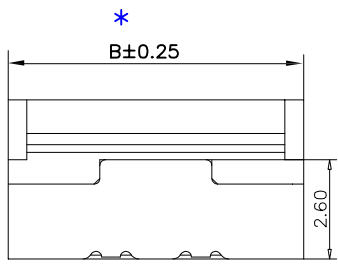
3D VIEW



SECTION A-A



RECOMMENDED PCB LAYOUT



RECOMMENDED PCB LAYOUT

No. of Contacts	Dimensions		
	A	B	C
2	1.00	3.90	2.50
3	2.00	4.90	3.50
4	3.00	5.90	4.50
5	4.00	6.90	5.50
6	5.00	7.90	6.50
7	6.00	8.90	7.50
8	7.00	9.90	8.50
9	8.00	10.90	9.50
10	9.00	11.90	10.50
11	10.00	12.90	11.50
12	11.00	13.90	12.50
13	12.00	14.90	13.50
14	13.00	15.90	14.50
15	14.00	16.90	15.50
16	15.00	17.90	16.50
17	16.00	18.90	17.50
18	17.00	19.90	18.50
19	18.00	20.90	19.50
20	19.00	21.90	20.50

EST1005 W VS - 1\*NP X - B - XG - NK-HF

↑ 羿通代码+间距      ↑ PIN数      ↑ X本色      ↑ X普通      ↑ XG中的X示意尼龙料,      ↑ HF无卤

1单排      B黑色      R红色      L蓝色      Y黄色      G绿色      B带扣      U超薄      PH组合排针      FH组合排母      H高弯      P平弯      1为PPS, 2为PBT, 3为LCP, 4为ABS, 5为PA6T, 6为PA66      NK为NO MARK      MK为有MARK      NF普通通卤

V示意180°直针, VS立式      R示意90°弯针, RS卧式      G示意PIN针镀金, S为PIN针镀锡

W示意针座      W后无0默认材质为V0      W后带2示意V2



东莞市羿通实业有限公司  
 DONGGUAN EASTOM ELECTRONIC Co., Ltd.

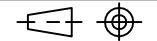
料号PART NO: EST1005WVS-1\*NPX-B-3G

品名 TITLE: NH1.0立贴

材料:      单位: MM      包装规格:      比例: 1:1

日期版次 REVISION      日期 DATE      变更内容 DESCRIPTION      核 准 APPROVALBY      制图:      审核:      核准:      日期: 2021.4.12

一般公差	
GENERAL TOLERANCE	
X.X	±0.25
X.XX	±0.20
ANGLE	±1°



6

5

4

3

2

1

HXL