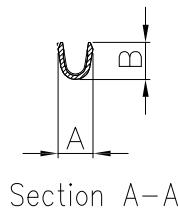
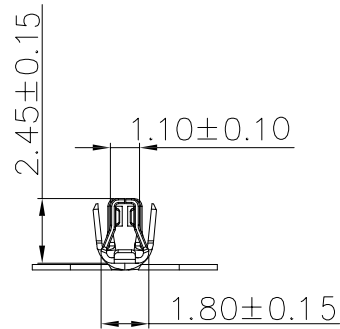
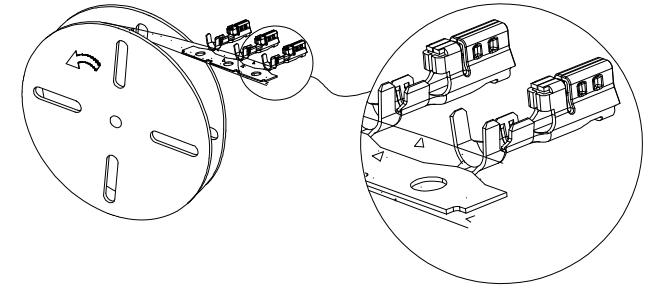
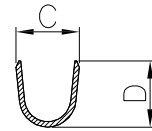


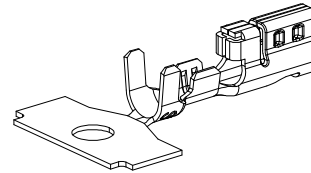
See Note 1



Section A-A



Section B-B



EST2519 T P X - 2 X- X

↑ 羿通代码+间距  
↑ T示意端子  
↑ X普通脚  
H高脚  
E增高型脚  
↑ X普通  
L长  
S短  
U超薄  
↑ X公端  
G母端  
C示意90°  
S示意180°

P磷铜  
B黄铜  
E合金铜

0素材  
2镀锡先冲后镀  
3镀锡先镀后冲  
4镀全镍(镀后冲)  
4.2镀全镍先冲后镀  
5G、15G示意镀金50"或150", 1G示意镀金1U"

EST2519TPH	AWG#22~#20 (0.35~0.5mm <sup>2</sup> )	1.50~1.80mm	1.90	2.05	2.90	2.50
EST2519TPX	AWG#26~#24 (0.13~0.22mm <sup>2</sup> )	1.28~1.42mm	1.30	1.40	2.40	2.50
PART NO.	Wire Range	Insulation O.D.	A	B	C	D

■ Specifications:

- Current Rating: 2A AC/DC(0.13mm<sup>2</sup> Wire)  
2.5A AC/DC(0.22mm<sup>2</sup> Wire)  
3A AC/DC(0.35mm<sup>2</sup> Wire)  
3.5A AC/DC(0.5mm<sup>2</sup> Wire)
- Temperature Range:  
-40°C~+105°C(Phosphor Bronze)  
-40°C~+125°C(High conductivity copper)
- Contact Resistance: <10m Ω(Initial)  
<20m Ω(After Testing)



东莞市羿通实业有限公司  
DONGGUAN EASTOM ELECTRONIC Co., Ltd.

料号PART NO: EST2519TPX-2X-G

品名 TITLE: 2519-T

材料:

单位: MM

包装规格:

比例: 1:1

制图:

审核:

核准:

日期: 2022/7/3

日期版次  
REVISION

日期  
DATE

变更内容  
DESCRIPTION

核 准  
APPROVALBY

一般公差  
GENERAL TOLERANCE  
X.X ±0.25  
X.XX ±0.20  
ANGLE ±1°

