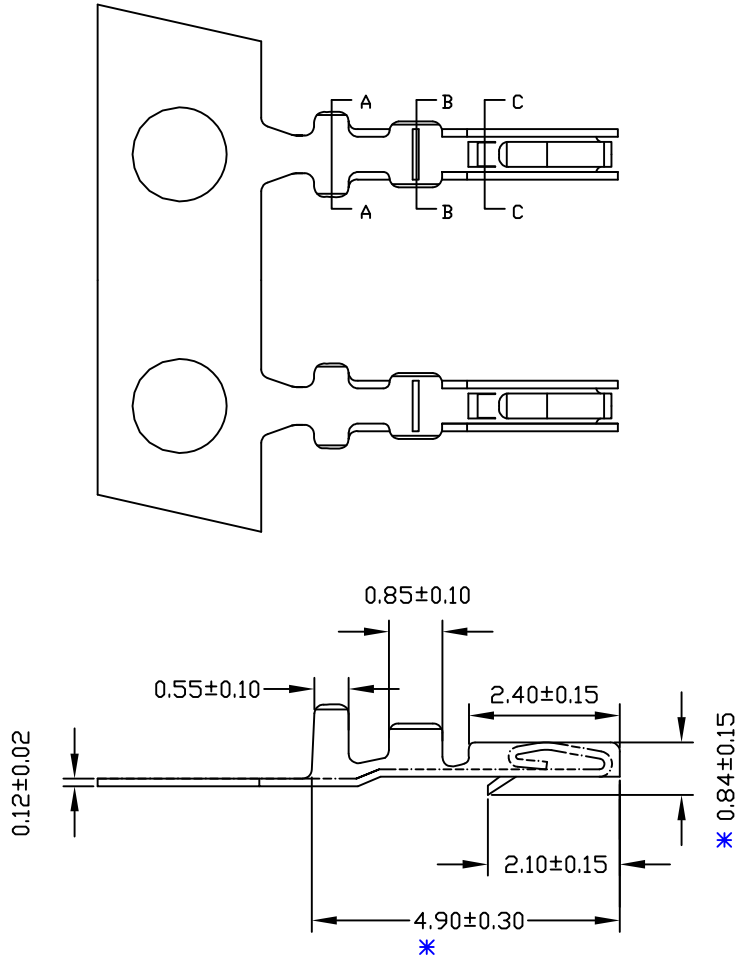
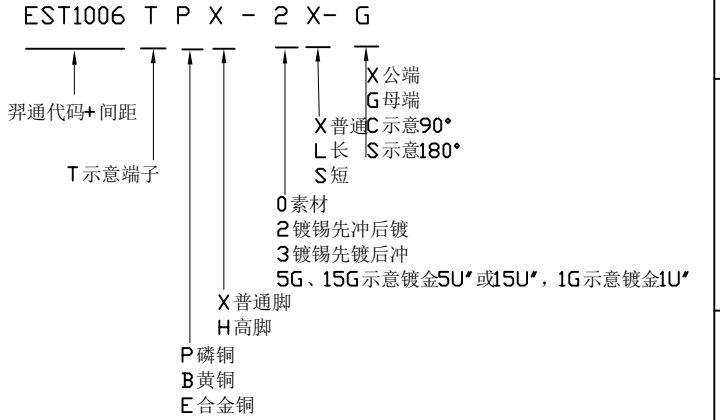
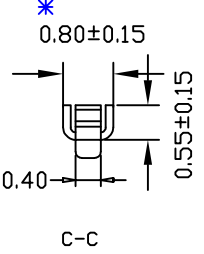
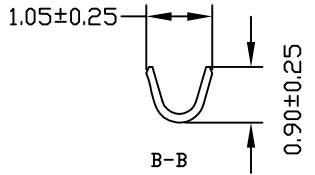
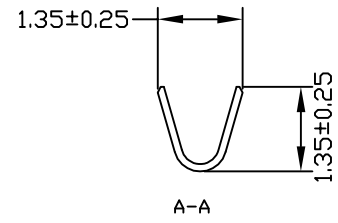


**SPECIFICATIONS**

- Voltage rating: 250V DC/AC (rms)
- Current rating: 1.0A
- Withstand voltage: 500V AC(rms)
- Working Temperature: 85℃
- Insulation resistance: ≥1000MΩ
- Contact resistance: ≤0.02Ω

**TERMINAL**

- PART NO:
- THICKNESS: 0.12MM
- MATERIAL: PHOSPHOR BRONZE
- FINISH: GOLD PLATED
- APPLICABLE WIRE: AWG#28-#32
- Q'TY: 20000PCS/REEL



**EST** **东莞市羿通实业有限公司**  
**DONGGUAN EASTOM ELECTRONIC Co., Ltd.**

料号PART NO: EST1006TPX-2X-G				一般公差 GENERAL TOLERANCE	
品名 TITLE: SHLD1.0-T				X.X ±0.30	
材料: 单位: MM 包装规格: 比例: 1:1				X.XX ±0.25	
日期版次 REVISION 日期 DATE 变更内容 DESCRIPTION 核 准 APPROVALBY				ANGLE ±1°	
制图: 审核: 核准: 日期: 2020. 4. 17					