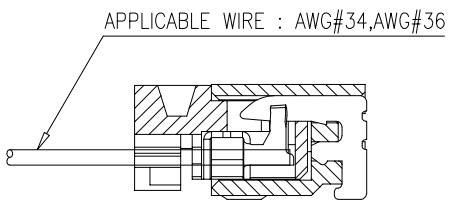
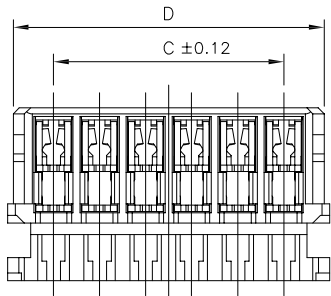
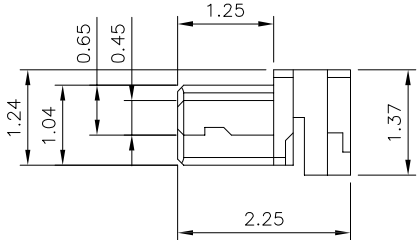
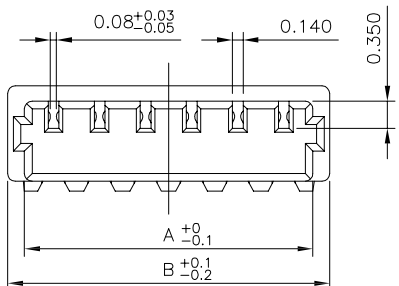
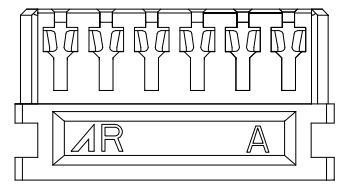
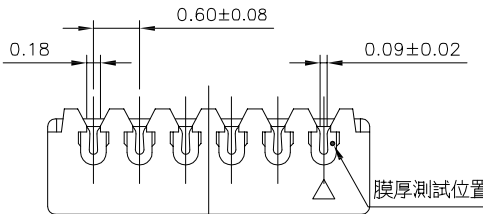


6 5 4 3 2 1



MATED CONDITION



EST0600 H - 1*NP X - B - X - HF-NK - X

↑ 羿通代码+间距 ↑ PIN数 ↑ X 普通 ↑ X 公胶壳 ↑ G 母胶壳

↑ B 带扣 ↑ C 刺破 ↑ L 示意 ↑ LOCK TYPE ↑ NO MARK ↑ A 灼热丝750

↑ R 红色 ↑ U 超薄 ↑ F 防呆型 ↑ HV 带高凸点 ↑ LC 带低凸点 ↑ B 灼热丝850

↑ Y 黄色 ↑ K 卡槽 ↑ E 有耳 ↑ NE 无耳

↑ C 透明

1 示意单排 2 示意双排

H 示意胶壳, H 后无数字默认材质V0 H 后带数字2示意材质V2

| CIRCUITS | DIMENSION | | | |
|----------|-----------|-------|------|-------|
| | A | B | C | D |
| 2 | 1.36 | 1.80 | 0.60 | 1.65 |
| 4 | 2.56 | 3.00 | 1.80 | 2.85 |
| 5 | 3.16 | 3.60 | 2.40 | 3.45 |
| 6 | 3.76 | 4.20 | 3.00 | 4.05 |
| 8 | 4.96 | 5.40 | 4.20 | 5.25 |
| 10 | 6.16 | 6.60 | 5.40 | 6.45 |
| 12 | 7.36 | 7.80 | 6.60 | 7.65 |
| 16 | 9.76 | 10.20 | 9.00 | 10.05 |

NOTE:

1.MATERIAL:
Housing: ThermalPlastic (UL94V-0)
Terminal: Copper Alloy
Color: Natural

2.SPECIFICATION:
Current Rating: 0.2A AC,DC (AWG#36)
0.3A AC,DC (AWG#34)
Voltage Rating: 30V (AC,DC)
Contact Resistance: Initial: 40mΩ max
After environmental: 50mΩmax
Insulator Resistance:Initial: 100MΩ min
After environmental:100MΩ min
Withstanding Voltage:200v AC for 1 minute
Temperature Range: -25°C~85°C
Applicable Wire: AWG #36; AWG#34
Insulation O.D.: φ0.29±0.02mm(AWG#36)
φ0.32±0.02mm(AWG#34)

东莞市羿通实业有限公司
DONGGUAN EASTOM ELECTRONIC Co., Ltd.

料号PART NO: EST0600HS-1*NPX-X

品名 TITLE: 0.6 刺破

| | | | | |
|-----|---------------|-------|------------------------|---|
| 材料: | 单位: MM | 包装规格: | 比例: 1:1 | 一般公差 GENERAL TOLERANCE X.X ±0.25 X.XX ±0.20 ANGLE ±1° |
| 制图: | 审核: | 核准: | 日期: 2022. 1. 12 | |

| 日期版次 REVISION | 日期 DATE | 变更内容 DESCRIPTION | 核 准 APPROVALBY |
|------------------|------------|---------------------|-------------------|
| | | | |

6 5 4 3 2 1