

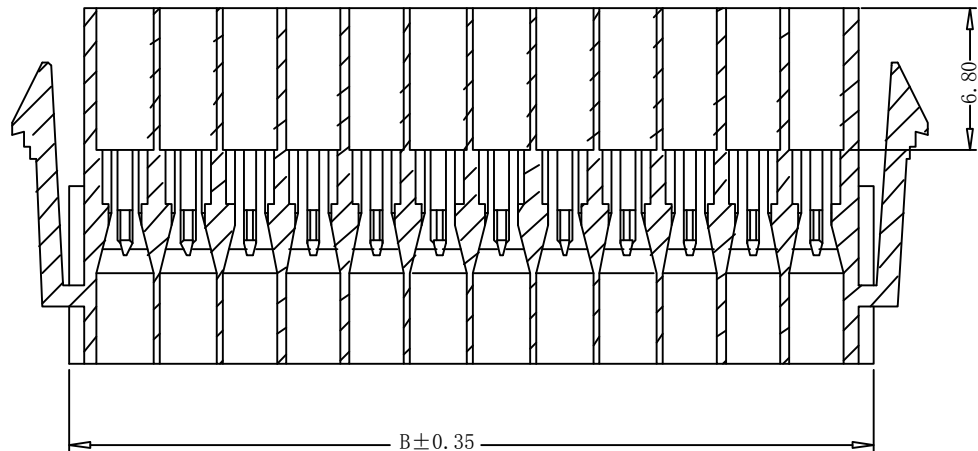
13790510059

5

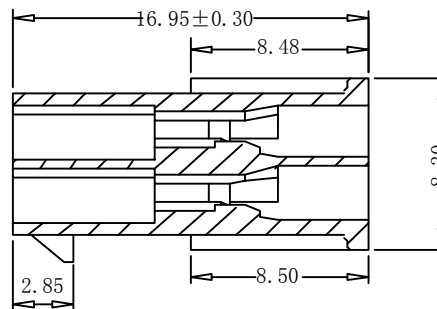
4

3

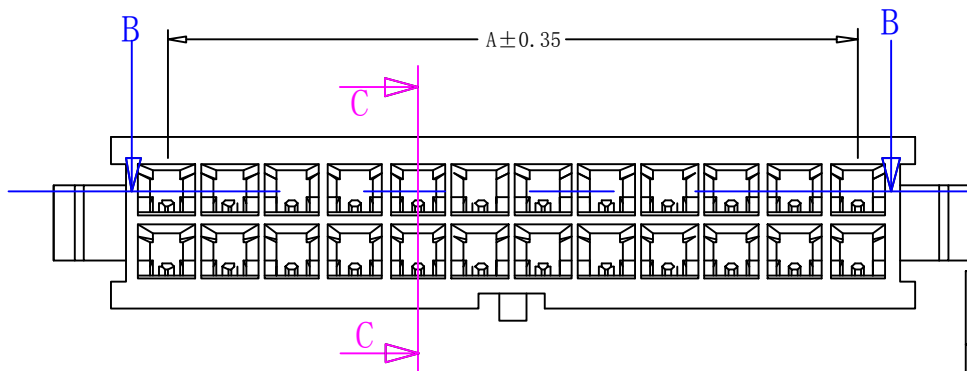
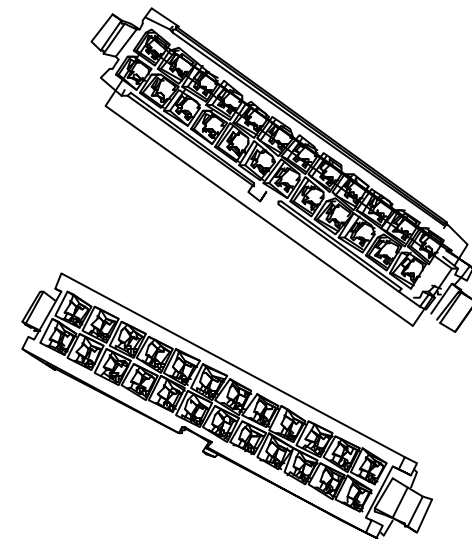
2



SECTION B---B



SECTION C---C



POLES	Dimensions mm	
	A	B
2*1P		5.4
2*2P	3.0	8.4
2*3P	6.0	11.4
2*4P	9.0	14.4
2*5P	12.0	17.4
2*6P	15.0	20.4
2*7P	18.0	23.4

EST3001 H - 2*NP X - E - G - HF-NK - X

↑ 羿通代码+间距

↑ X普通
B带扣
C刺破
2L示意两侧带锁扣
U超薄F防呆型
HV带高凸点
LC带低凸点,
K卡槽
E有耳

↑ X公胶壳
G母胶壳

↑ NO MARK

↑ A灼热丝750
B灼热丝850
X普通料

PIN数
1示意单排
2示意双排

H示意胶壳,
H后无数字默认材质V0
H后带数字2示意材质V2

■ SPECIFICATIONS

- Voltage rating: 250V AC, DC
- Current rating: 5A, AC, DC
- Withstanding Voltage: 1500V AC/minute
- Insulation resistance: 1000MΩ min
- Temperature range: -25° C~+85° C

日期版次 REVISION	日期 DATE	变更内容 DESCRIPTION	核 准 APPROVALBY



东莞市羿通实业有限公司
DONGGUAN EASTOM ELECTRONIC Co., Ltd.

料号PART NO: EST3002H-2*NPB-E-G

品名 TITLE: MX3.0-H母(有耳双排)

材料: PA66

单位: MM

包装规格: 1K/bag

比例: 1:1

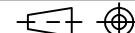
制图:

审核:

核准:

日期: 2022/07/29

一般公差 GENERAL TOLERANCE	
X. X	±0.30
X. XX	±0.20
X. XXX	±0.10
ANGLE	±1°



ZL