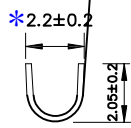
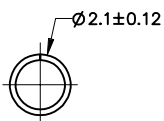


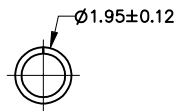
SEC A-A



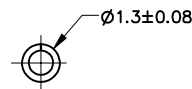
SEC B-B



SEC C-C



SEC D-D



SEC E-E

EST4500 T B X - 2 X - X

↑ 非通代码+间距
↑ T示端子
↑ X普通脚
↑ H高脚
↑ X普通
↑ L长
↑ S短

P磷铜
B黄铜
E合金铜
0素材
2镀锡先冲后镀
3镀锡先镀后冲
4镀全镍(镀后冲)
4.2镀全镍先冲后镀
5G、15G示意镀金5U*或15U*、16示意镀金1U*

Technical parameters

- 1、Applicable wire:AWG#22-#26;
- 2、Rated voltage:600V DC/AC(rams);
- 3、Rated Current:5A AC.DC;
- 4、Withstanding voltage:1500V AC/Minute;
- 5、Working temperature:-25°C~+85°C

日期版次 REVISION	日期 DATE	变更内容 DESCRIPTION	核 准 APPROVALBY	料号PART NO: EST4500TBX-2X-X	品名 TITLE: 1.3-T公			一般公差 GENERAL TOLERANCE X.X ±0.25 X.XX ±0.20 ANGLE ±1°
				材料:	单位: MM	包装规格:	比例: 1:1	
				制图:	审核:	核准:	日期: 2022.8.31	HZ



东莞市羿通实业有限公司
DONGGUAN EASTOM ELECTRONIC Co., Ltd.