

13790510059

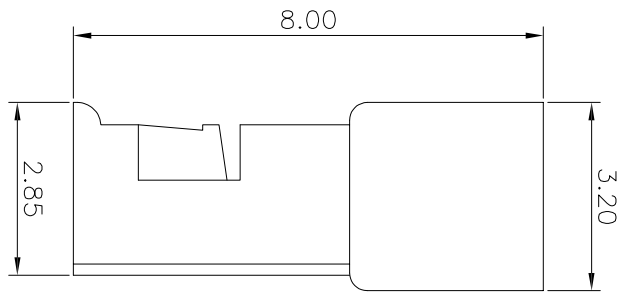
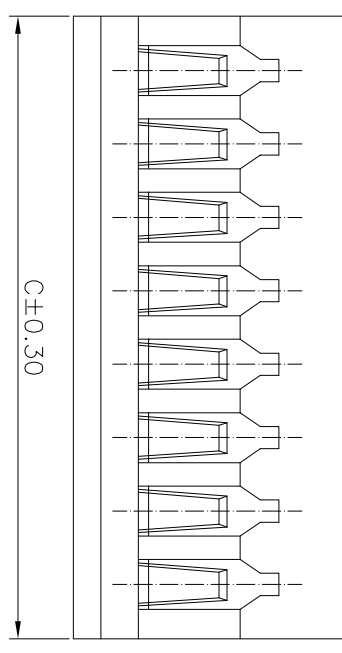
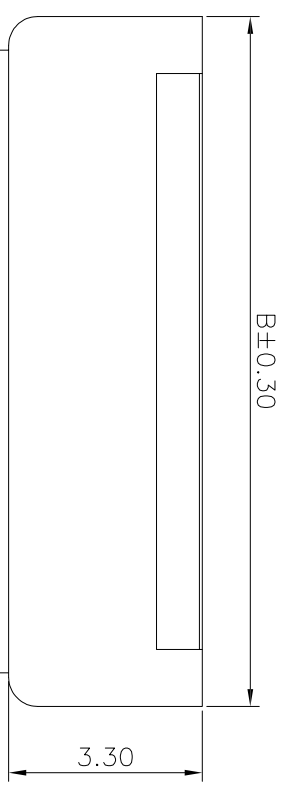
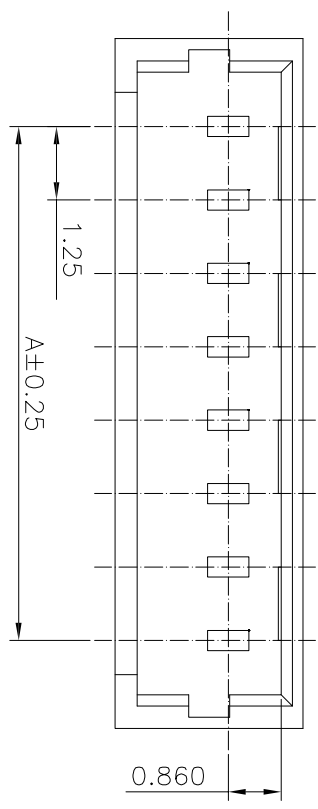
5

4

3

2

1



Part No	A	B	C
2	1.25	4.40	3.10
3	2.50	5.65	4.35
4	3.75	6.90	5.60
5	5.00	8.15	6.85
6	6.25	9.60	8.10
7	7.50	10.65	9.35
8	8.75	11.90	10.60
9	10.00	13.15	11.85
10	11.25	14.40	13.10
11	12.50	15.65	14.35
12	13.75	16.90	15.60
13	15.00	18.15	16.85
14	16.25	19.40	18.10
15	17.50	20.65	19.35
16	18.75	21.90	20.60

Circuits: 2~16

ES1250 H - 1*NP X - X - HF-NK - X

- ↑ 羿通代码+间距
- ↑ PIN数
- ↑ 1示意单排
- ↑ 2示意双排
- ↑ X本色
- ↑ B黑色
- ↑ C铜皮
- ↑ X胶壳
- ↑ G母胶壳
- ↑ 2示意两侧带锁扣
- ↑ U超薄防呆型
- ↑ HV带高凸点
- ↑ LC带低凸点
- ↑ K卡榫
- ↑ NE无耳
- ↑ NO MARK
- ↑ HF示意无卤
- ↑ NF普通含卤
- ↑ A灼热丝750
- ↑ B灼热丝850
- ↑ X普通料
- ↑ H示意胶壳
- ↑ H后无数字默认材质V0
- ↑ H后带数字2示意材质V2



东莞市羿通实业有限公司
DONGGUAN EASTOM ELECTRONIC Co., Ltd.

料号PART NO: EST1250H-1*NPX-X-G

品名 TITLE: MXL 25-H(母)

材料:

单位: MM

比例: 1:1

日期版次 REVISION

日期 DATE

变更内容 DESCRIPTION

核准 APPROVALBY

制图: KR

■ SPECIFICATIONS

- Voltage rating:125V AC/DC;
- Current rating:1A AC/DC;
- Withstanding Voltage:250V AC/minute
- Insulation resistance:100MΩ Min
- Temperature range:-40°C~+85°C
- Contact resistance:20mΩ Max
- Conductor size:AWG28~#32

一般公差	GENERAL TOLERANCE
X.X	±0.30
X.XX	±0.25
ANGLE	±1°

6

5

4

3

2

1

KR