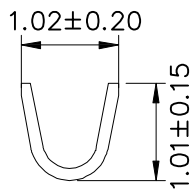
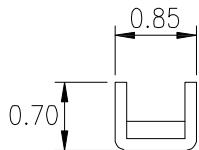


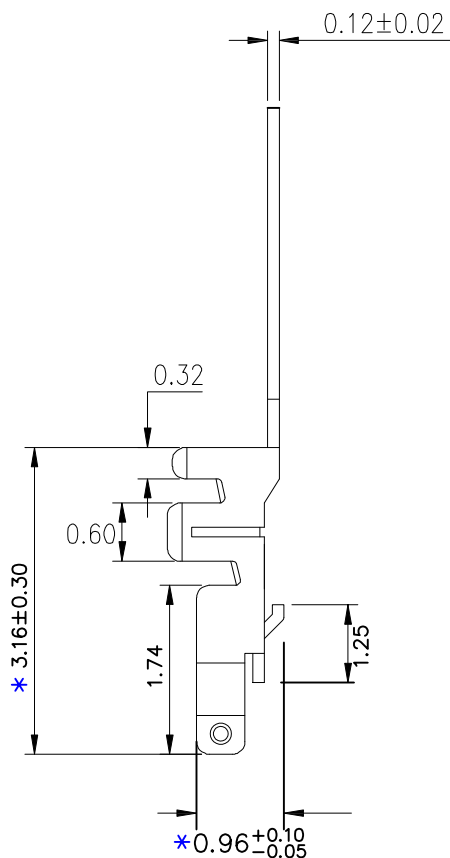
SECTION A-A



SECTION B-B



SECTION C-C



EST1201 T P X - 2 X - X

↑ 羿通代码+间距  
↑ T示意端子  
↑ X公端  
↑ G母端  
↑ X普通 C示意90°  
↑ L长 S示意180°  
↑ S短  
↑ 0素材  
↑ 2镀锡先冲后镀  
↑ 3镀锡先镀后冲  
↑ 5G、15G示意镀金5U"或15U", 1G示意镀金1U"  
↑ X普通脚  
↑ H高脚  
↑ P磷铜  
↑ B黄铜  
↑ E合金铜

Specification (Abbreviation)  
 Family: Housing  
 Pitch (mm): 1.2mm  
 Operation Direction: S/R R/A  
 Current (A): AWG#28/2A; AWG#30/1.5A; AWG#32/1A  
 Insulation O. D.:  $\phi$  0.55~0.7mm (AWG#32~#28);  
 Voltage: 50 Volts AC, DC (per pin)  
 Current: 1.0A AC, DC (AWG#32)  
 1.5A AC, DC (AWG#30)  
 2.0A AC, DC (AWG#28)  
 Contact Resistance: 40 mΩ max.  
 Dielectric Withstanding Voltage: 500V DC Min.  
 Insulation Resistance: 100MΩ min.  
 Operating Temp.: -40°C ~ +85°C

**EST** 东莞市羿通实业有限公司  
**DGEASTOM** DONGGUAN EASTOM ELECTRONIC Co., Ltd.

料号PART NO: EST1201TPX-1GX-G				一般公差 GENERAL TOLERANCE	
品名 TITLE: JST1.2-T				X.X ±0.25	
材料:		单位: MM	包装规格:	X.XX ±0.20	
日期版次 REVISION		日期 DATE	变更内容 DESCRIPTION	核 准 APPROVALBY	比例: 1:1
制图:		审核:	核准:	日期: 2022.4.14	ANGLE ±1°